

WAAS CH 93615 W27B	APP CRS 273°	Rwy Idg TDZE Apt Elev	5003 8 10
--	------------------------	-----------------------------	--------------------------------------

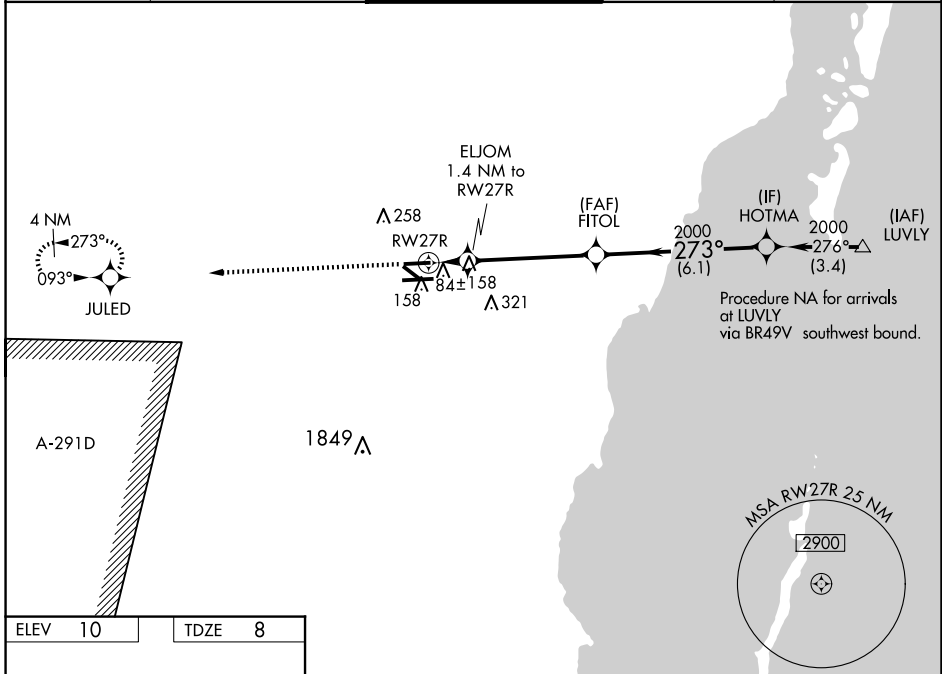
RNAV (GPS) RWY 27R

MIAMI EXEC (TMB)

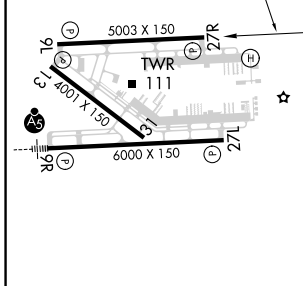
▼ For uncompensated Baro-VNAV systems, LNAV/VNAV NA below -1.5°C (5°F) or above 49°C (120°F). DME/DME RNP-0.3 NA. When local altimeter setting not received, use Miami Intl altimeter setting and adjust all DA 27 feet and all MDA 40 feet; increase LPV all Cats visibility ¼ mile, LNAV Cat D visibility ¼ mile, and Circling Cat D visibility ¼ mile. Baro-VNAV NA when using Miami Intl altimeter setting. Circling to Rwy 13, 31 NA at night.

▲ MISSED APPROACH: Climb to 2000 direct JULED and hold.

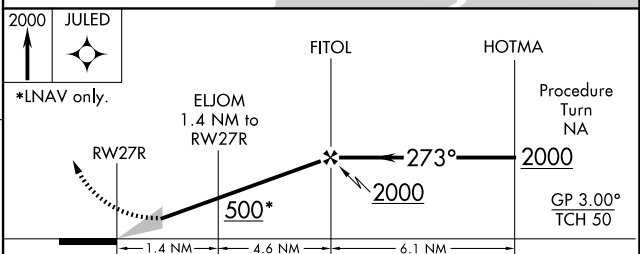
ATIS 124.0	MIAMI APP CON 125.5 354.1	MIAMI EXEC TOWER★ 118.9 (CTAF) 0	GND CON 121.7	CLNC DEL 133.0
----------------------	-------------------------------------	--	-------------------------	--------------------------



ELEV 10	TDZE 8
---------	--------



REIL Rwy 13
HIRL Rwy 9R-27L
MIRL Rwy 9L-27R
MIRL Rwy 13-31



CATEGORY	A	B	C	D
LPV DA	258- ³ / ₄		250 (300- ³ / ₄)	
LNAV/VNAV DA	352-1 ¹ / ₄		344 (400-1 ¹ / ₄)	
LNAV MDA	420-1	412 (500-1)	420-1 ¹ / ₄	412 (500-1 ¹ / ₄)
CIRCLING	460-1 450 (500-1)	560-1 550 (600-1)	640-1 ³ / ₄ 630 (700-1 ³ / ₄)	640-2 630 (700-2)

SE-3, 20 FEB 2025 to 20 MAR 2025

SE-3, 20 FEB 2025 to 20 MAR 2025