

WAAS CH 99415 W 09B	APP CRS 093°	Rwy Idg TDZE Apt Elev	5003 8 10
---	------------------------	-----------------------------	--------------------------------------

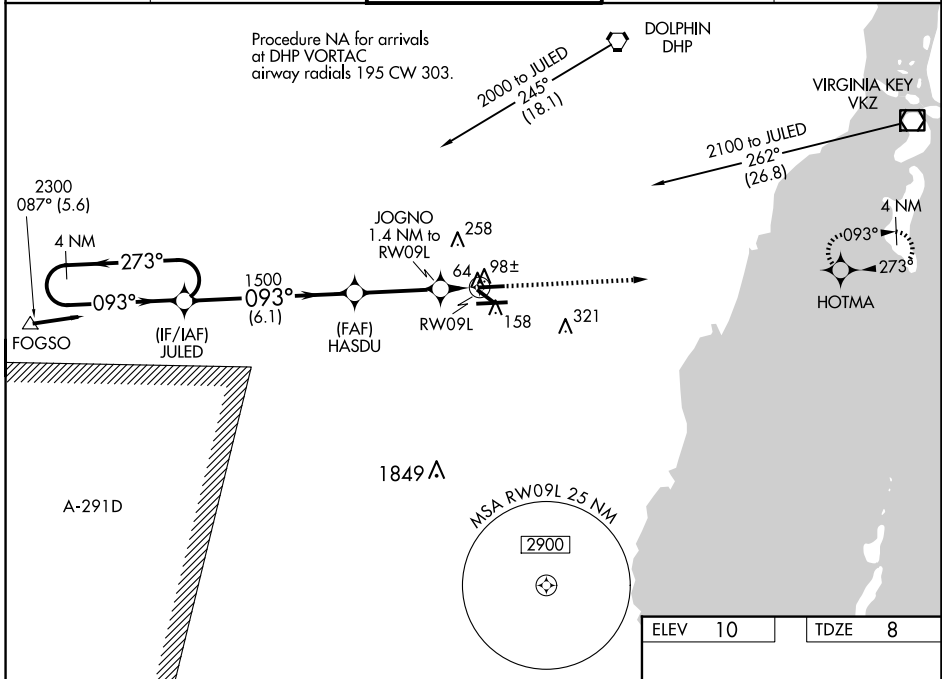
RNAV (GPS) RWY 9L

MIAMI EXEC (TMB)

▼ Circling Rwy 13,31 NA at night. Baro-VNAV NA when using Miami Intl altimeter setting.
▲ For uncompensated Baro-VNAV systems, procedure NA below -15°C (5°F) or above 48°C (118°F). DME/DME RNP-0.3 NA. When local altimeter setting not received, use Miami Intl altimeter setting and increase all DA 27 feet and all MDA 40 feet; increase LPV all Cats visibility ¼ mile, LNAV Cat C visibility ¼ mile, and Circling Cat D visibility ¼ mile.

MISSED APPROACH: Climb to 2000 direct HOTMA and hold.

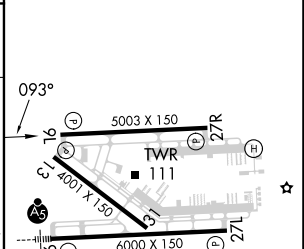
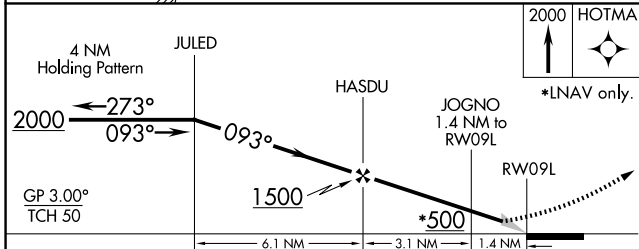
ATIS 124.0	MIAMI APP CON 125.5 354.1	MIAMI EXEC TOWER* 118.9 (CTAF) 0	GND CON 121.7	CLNC DEL 133.0
----------------------	-------------------------------------	--	-------------------------	--------------------------



SE-3, 20 FEB 2025 to 20 MAR 2025

SE-3, 20 FEB 2025 to 20 MAR 2025

ELEV 10	TDZE 8
---------	--------



CATEGORY	A	B	C	D
LPV DA		258-¾	250 (300-¾)	
LNAV/VNAV DA		364-1¼	356 (400-1¼)	
LNAV MDA	380-1	372 (400-1)		380-1¼ 372 (400-1¼)
CIRCLING	460-1 450 (500-1)	560-1 550 (600-1)	640-1¾ 630 (700-1¾)	640-2 630 (700-2)

REIL Rwy 13
 HIRL Rwy 9R-27L 0
 MIRL Rwy 9L-27R
 MIRL Rwy 13-31 0