

|             |          |             |
|-------------|----------|-------------|
| APP CRS     | Rwy Idg  | <b>7508</b> |
| <b>298°</b> | TDZE     | <b>3011</b> |
|             | Apt Elev | <b>3011</b> |

# RNAV (GPS) RWY 30

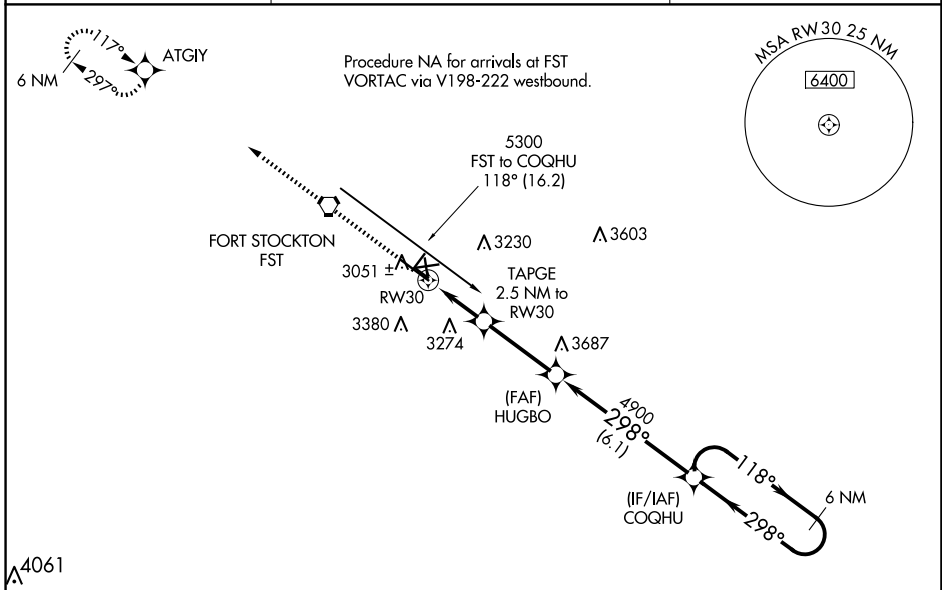
FORT STOCKTON-PECOS COUNTY (FST)

RNP APCH.

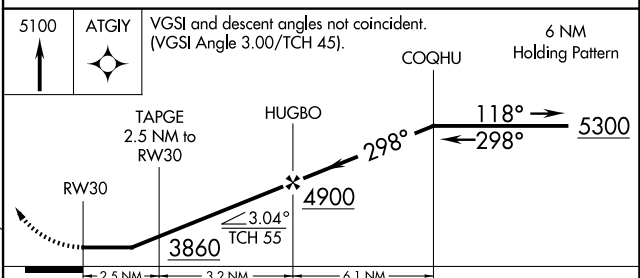
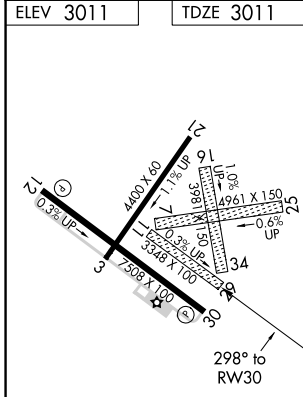
▼ Rwy 30 helicopter visibility reduction below 1 SM NA. When local altimeter setting not received, use Pecos altimeter setting and increase all MDA 160 feet, increase LNAV Cat C/D visibility ½ mile, Circling Cat C visibility ¾ mile, Cat D visibility ½ mile. Circling NA to Rwys 7-25, 11-29 and 16-34. Straight-in Rwy 30 NA at night, Circling Rwy 3, 21, 30 NA at night.

▲ MISSED APPROACH: Climb to 5100 direct ATGIY and hold.

|                        |   |                                 |
|------------------------|---|---------------------------------|
| ASOS<br><b>118.525</b> | ALBUQUERQUE CENTER<br><b>135.875 292.15</b> | UNICOM<br><b>122.8 (CTAF) 0</b> |
|------------------------|---|---------------------------------|



|                  |                  |
|------------------|------------------|
| ELEV <b>3011</b> | TDZE <b>3011</b> |
|------------------|------------------|



| CATEGORY | A                     | B                     | C                       | D                       |
|----------|-----------------------|-----------------------|-------------------------|-------------------------|
| LNAV MDA | 3500-1                | 489 (500-1)           | 3500-1¼<br>489 (500-1¼) | 3500-1½<br>489 (500-1½) |
| CIRCLING | 3540-1<br>529 (600-1) | 3660-1<br>649 (700-1) | 3740-2<br>729 (800-2)   | 3760-2½<br>749 (800-2½) |

SC-3, 20 FEB 2025 to 20 MAR 2025

SC-3, 20 FEB 2025 to 20 MAR 2025