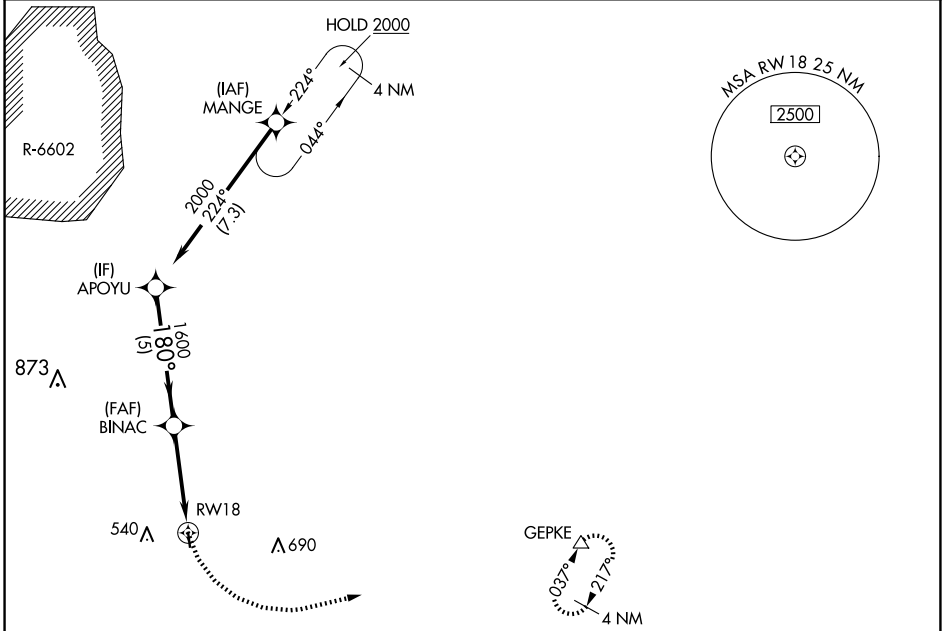


APP CRS	Rwy Idg	N/A
180°	TDZE	N/A
	Apt Elev	329

RNAV (GPS)-A
BRUNSWICK COUNTY (LVL)

RNP APCH.		MISSED APPROACH: Climbing left turn to 4000 direct GEPKE and hold, continue climb-in-hold to 4000.
AWOS-3 119.625	WASHINGTON APP CON 118.75 377.1	UNICOM 122.8 (CTAF)



NE-3, 20 FEB 2025 to 20 MAR 2025

NE-3, 20 FEB 2025 to 20 MAR 2025

ELEV 329		Visual Segment - Obstacles.		4000	GEPKE
APOYU		BINAC		△	
2000	180°	1600	RW18		
5 NM		3.9 NM			
CATEGORY	A	B	C	NA	D
CIRCLING	1340-3	1011 (1100-3)	NA		