

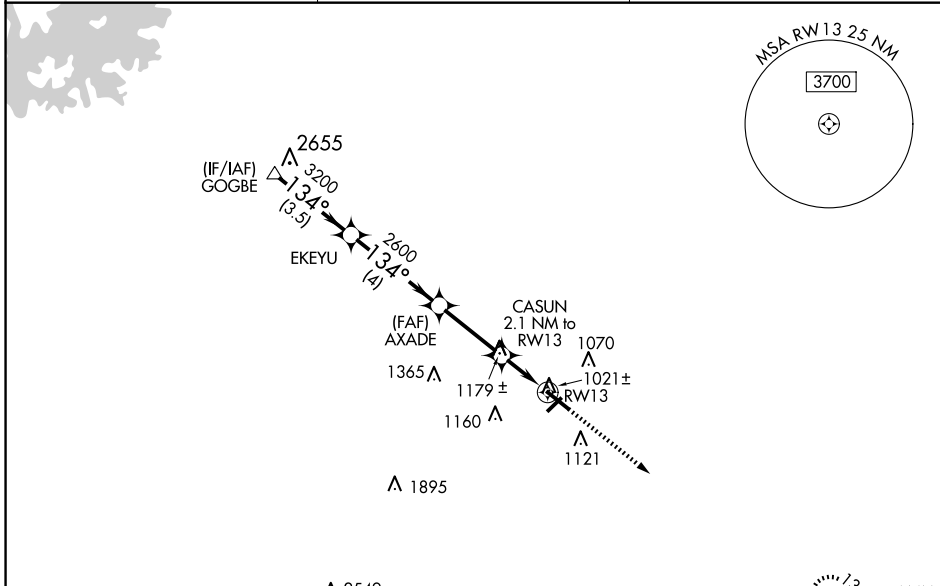
WAAS CH <b>90305</b> <b>W13A</b>	APP CRS <b>134°</b>	Rwy Idg TDZE Apt Elev	<b>5100</b> <b>933</b> <b>934</b>
--	------------------------	-----------------------------	---

# RNAV (GPS) RWY 13

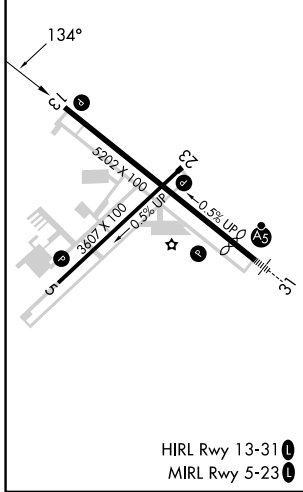
BARROW COUNTY (WDR)

RNP APCH.	MISSED APPROACH: Climb to 3000 direct CADEB and hold.
-----------	---

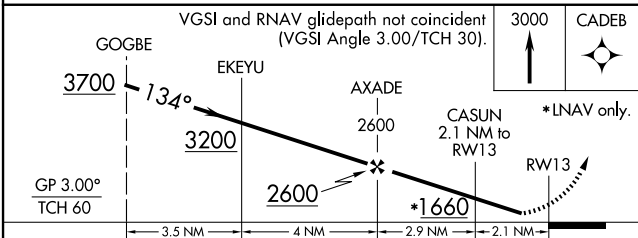
AWOS-3 <b>118.575</b>	ATLANTA APP CON ★ <b>132.475 291.1</b>	UNICOM <b>123.0</b> (CTAF)
--------------------------	---	-------------------------------



ELEV 934	<b>D</b>	TDZE 933
----------	----------	----------



△ 2549	CADEB
--------	-------



CATEGORY	A	B	C	D
LPV DA		1207-1	274 (300-1)	
LNAV/VNAV DA		1422-1 <sup>3</sup> / <sub>8</sub>	489 (500-1 <sup>3</sup> / <sub>8</sub> )	
LNAV MDA		1300-1	367 (400-1)	
CIRCLING	1400-1	1580-1	1660-2	1660-2 <sup>1</sup> / <sub>4</sub>
	466 (500-1)	646 (700-1)	726 (800-2)	726 (800-2 <sup>1</sup> / <sub>4</sub> )

SE-4, 20 FEB 2025 to 20 MAR 2025

SE-4, 20 FEB 2025 to 20 MAR 2025