

NDB IRS 382	APP CRS 165°	Rwy Idg TDZE Apt Elev	5201 915 925
-----------------------	------------------------	-----------------------------	---

NDB RWY 19

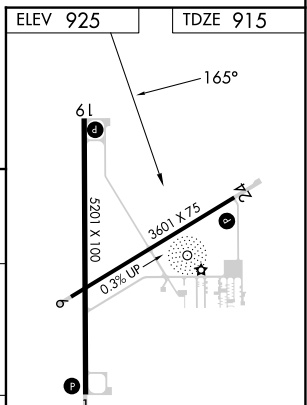
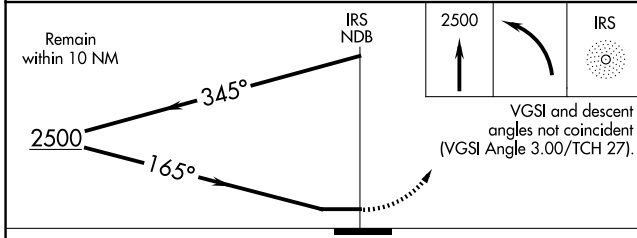
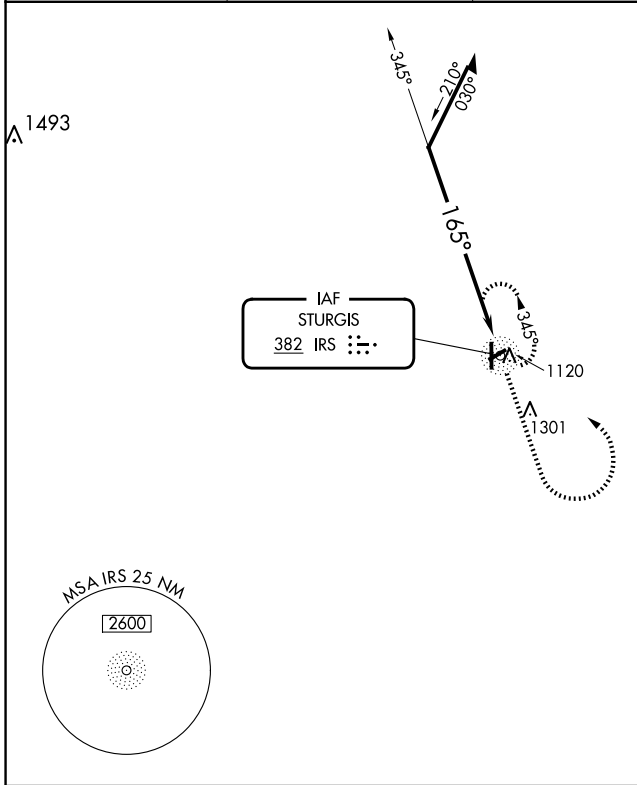
KIRSCH MUNI (IRS)

RADAR required for procedure entry.

Procedure NA at night. Rwy 19 helicopter visibility reduction below 1 SM NA.

MISSED APPROACH: Climb to 2500 then left turn direct IRS NDB and hold.

AWOS-3 121.325	GREAT LAKES APP CON * 121.2 239.25	CLNC DEL 118.325	UNICOM 123.05 (CTAF)
--------------------------	--	----------------------------	--------------------------------



CATEGORY	A	B	C	D
S-19	1520-1	605 (600-1)	1520-1¾	605 (600-1¾)
CIRCLING	1520-1	595 (600-1)	1620-2 695 (700-2)	1620-2¼ 695 (700-2¼)

REIL Rwy 1, 19 and 24
MIRL Rwy 1-19 and 6-24

EC-1, 20 FEB 2025 to 20 MAR 2025

EC-1, 20 FEB 2025 to 20 MAR 2025