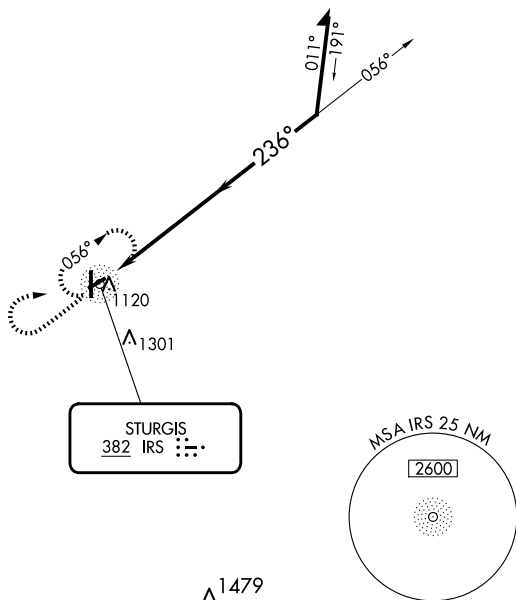


NDB IRS 382	APP CRS 236°	Rwy Idg TDZE Apt Elev	3601 925 925
-----------------------	------------------------	-----------------------------	---

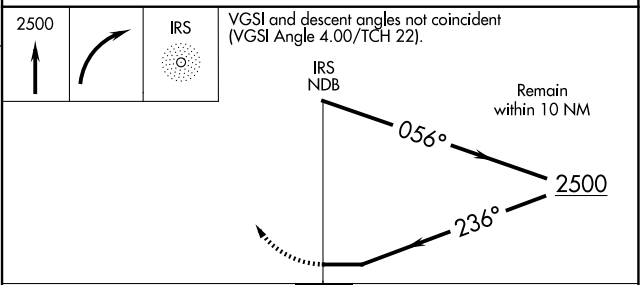
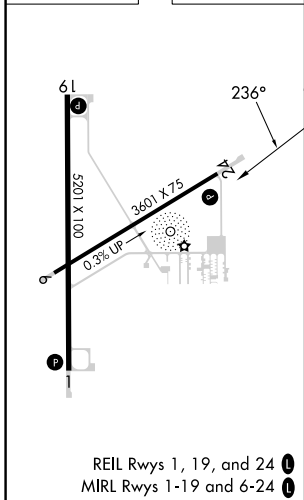
NDB RWY 24

KIRSCH MUNI (IRS)

RADAR required for procedure entry.		MISSED APPROACH: Climb to 2500 then right turn direct IRS NDB and hold.	
<p>▼ Circling Rwy 6 NA at night. ▲ Rwy 24 helicopter visibility reduction below ¼ SM NA.</p>		AWOS-3 121.325	GREAT LAKES APP CON * 121.2 239.25
		CLNC DEL 118.325	UNICOM 123.05 (CTAF) 0



ELEV 925	TDZE 925
----------	----------



CATEGORY	A	B	C	D
S-24	1500-1	575 (600-1)	1500-1½	575 (600-1½)
CIRCLING	1500-1	575 (600-1)	1620-2 695 (700-2)	1620-2¼ 695 (700-2¼)

EC-1, 20 FEB 2025 to 20 MAR 2025

EC-1, 20 FEB 2025 to 20 MAR 2025