

WAAS CH 42915	APP CRS 006°	Rwy Idg TDZE 915	5201
W01A		Apt Elev 925	

RNAV (GPS) RWY 1

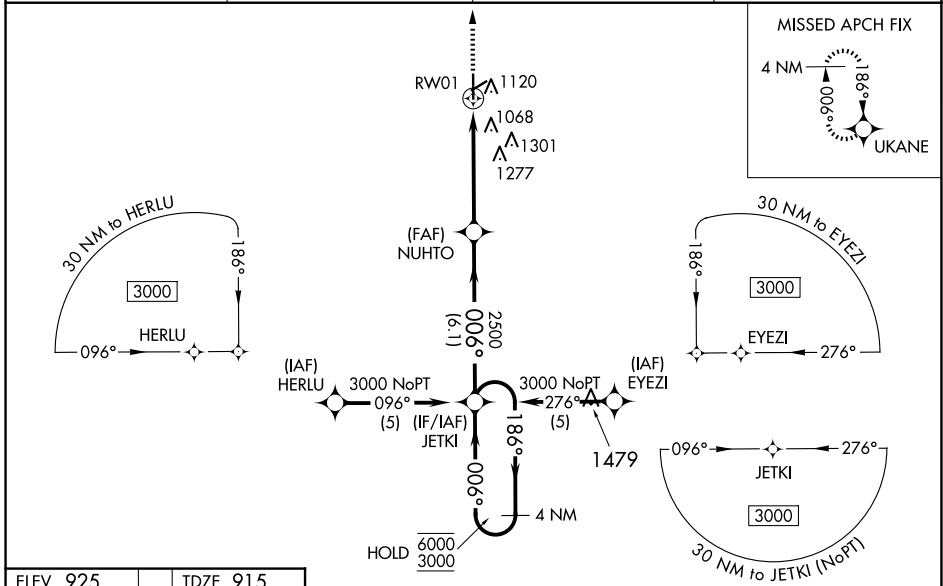
KIRSCH MUNI (IRS)

RNP APCH - GPS.

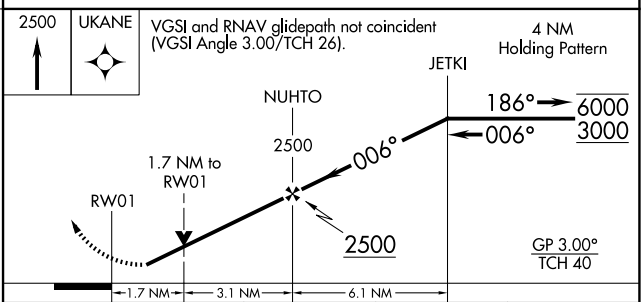
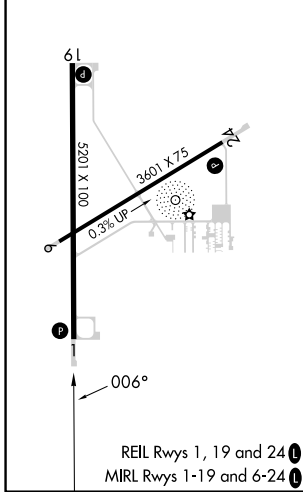
⚠ Circling Rwy 6 NA at night. Rwy 1 helicopter visibility reduction below $\frac{3}{4}$ SM NA. For uncompensated Baro-VNAV systems, LNAV/VNAV NA below -16°C or above 47°C. When local altimeter setting not received, use Three Rivers altimeter setting and increase LPV DA to 1219 feet; increase LNAV/VNAV DA to 1395 feet and all visibilities $\frac{1}{2}$ SM. Increase all MDAs 60 feet and LNAV visibility Cat C/D $\frac{1}{2}$ SM, and Circling visibility Cat C/D $\frac{1}{4}$ SM. VDP NA when using Three Rivers altimeter setting. Baro-VNAV NA when using Three Rivers altimeter setting.

MISSED APPROACH: Climb to 2500 direct UKANE and hold.

AWOS-3 121.325	GREAT LAKES APP CON * 121.2 239.25	CLNC DEL 118.325	UNICOM 123.05 (CTAF) 0
--------------------------	--	----------------------------	---



ELEV 925	TDZE 915
----------	----------



CATEGORY	A	B	C	D
LPV DA		1178- $\frac{7}{8}$	263 (300- $\frac{3}{4}$)	
LNAV/VNAV DA		1354-1 $\frac{1}{4}$	439 (500-1 $\frac{1}{4}$)	
LNAV MDA	1480-1	565 (600-1)	1480-1 $\frac{1}{8}$	565 (600-1 $\frac{1}{8}$)
CIRCLING	1480-1	555 (600-1)	1620-2 695 (700-2)	1620-2 $\frac{1}{4}$ 695 (700-2 $\frac{1}{4}$)

EC-1, 20 FEB 2025 to 20 MAR 2025

EC-1, 20 FEB 2025 to 20 MAR 2025