


LOC/DME I-BFT 109.75 Chan 34 (Y)	APP CRS 245°	Rwy Idg 24R 24L TDZE 6003 5197 583 584 Apt Elev 584 584
--	------------------------	--

ILS or LOC RWY 24R


BURKE LAKEFRONT (BKL)

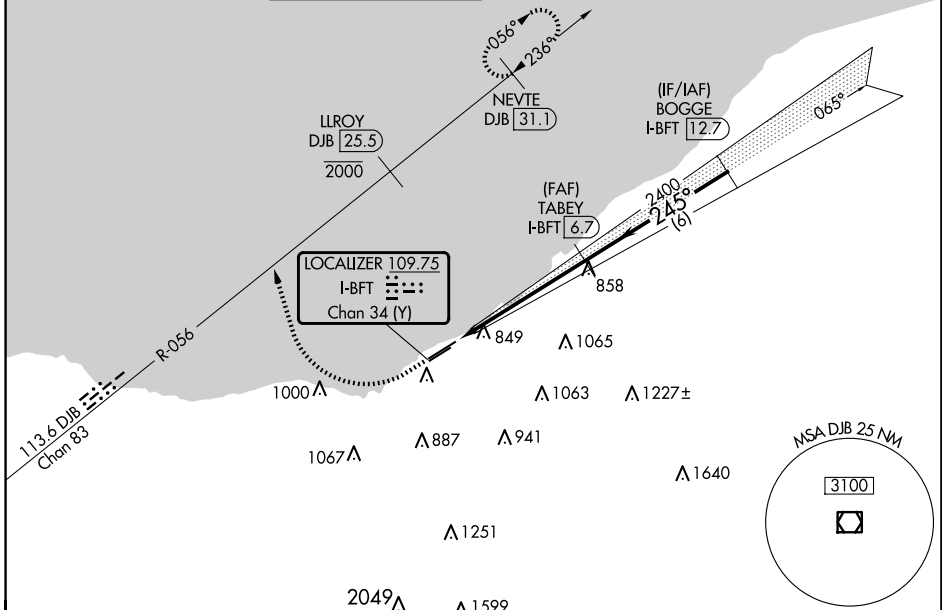
DME required. RADAR required for procedure entry.


▼ Circling Rwy 6R NA at night. Rwy 24R helicopter visibility reduction below 3/4 SM NA. Circling NA southeast of Rwy 6R-24L. S-ILS minimums NA when control tower closed.

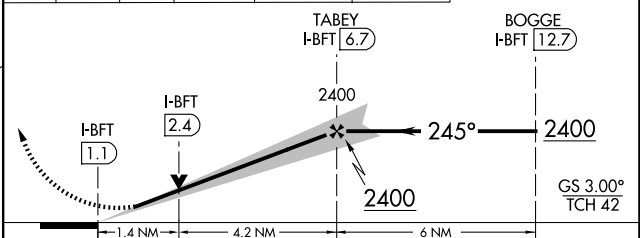
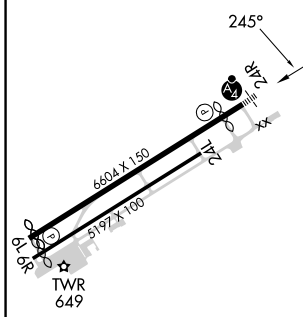
MALSF 

MISSED APPROACH: Climb to 1120 then climbing right turn heading 350° and DJB VOR/DME R-056 to cross LLROY/DJB 25.5 DME at or below 2000 then climb to 3000 on DJB VOR/DME R-056 northeast course to NEVTE/DJB 31.1 DME and hold.

ATIS 125.25	CLEVELAND APP CON 125.35 346.325	LAKEFRONT TOWER ★ 124.3 (CTAF) 0 339.8	GND CON 121.9 339.8	CLNC DEL 339.8	CLNC DEL 121.9 (when twr closed)	UNICOM 122.95 
-----------------------	--	--	-------------------------------	--------------------------	---	---



ELEV 584	D TDZE 24R 583 TDZE 24L 584	1120	 DJB R-056	LLROY DJB [25.5] 2000	3000	NEVTE DJB [31.1] NE crs
----------	---------------------------------------	------	--	--------------------------	------	----------------------------



CATEGORY	A	B	C	D
S-ILS 24R	916-3/4 333 (400-3/4)			
S-LOC 24R	1060-3/4 477 (500-3/4)	1060-1 1/8 476 (500-1/8)		477 (500-1/8)
SIDESTEP 24L	1060-1 476 (500-1)	1060-1 1/2 476 (500-1 1/2)	1060-2 476 (500-2)	
CIRCLING	1060-1 476 (500-1)	1140-1 1/2 556 (600-1 1/2)	1200-2 616 (700-2)	

EC-2, 20 FEB 2025 to 20 MAR 2025

EC-2, 20 FEB 2025 to 20 MAR 2025