

LOC/DME I-HEV 110.7 Chan 44	APP CRS 217°	Rwy Ldg TDZE Apt Elev	6800 743 755
---	------------------------	-----------------------------	---

ILS or LOC RWY 22

SHEBOYGAN COUNTY MEML INTL (SBM)

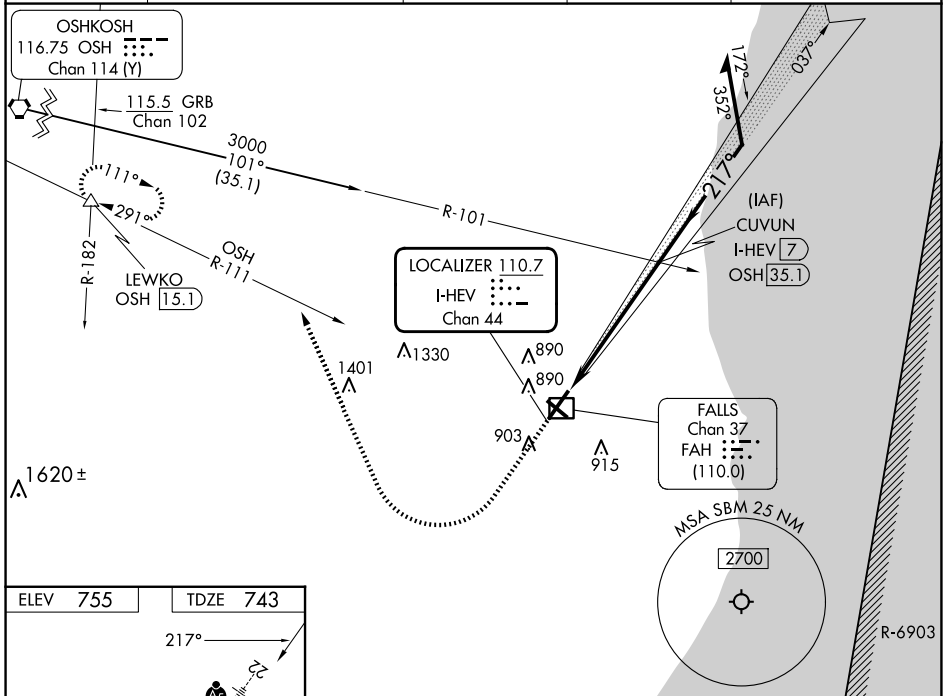
DME required.

▲ NA

MALSR

MISSED APPROACH: Climb to 1400 then climbing right turn to 3000 on heading 338° and OSH VORTAC R-111 to LEWKO INT/OSH 1.5.1 DME and hold.

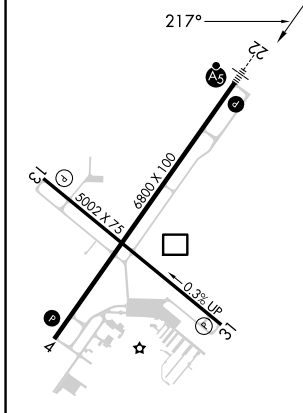
ASOS 118.425	MILWAUKEE APP CON 127.375 263.075	GCO 121.725	CLNC DEL 127.375	UNICOM 122.7 (CTAF) 0
------------------------	---	-----------------------	----------------------------	---------------------------------



EC-3, 20 FEB 2025 to 20 MAR 2025

EC-3, 20 FEB 2025 to 20 MAR 2025

ELEV 755	TDZE 743
----------	----------



- REIL Rwy 4
- MIRL Rwy 13-31
- HIRL Rwy 4-22

1400	3000	OSH R-111	LEWKO	Use I-HEV DME when on the localizer course.
↑	hdg 338°	▲		CUVUN I-HEV 7
*LOC only.				Remain within 10 NM
I-HEV 1.3	*I-HEV 2.6	2600	2600	2600
1.3 NM		4.4 NM		GS 3.00° TCH 50

CATEGORY	A	B	C	D
S-ILS 22	943-1/2 200 (200-1/2)			
S-LOC 22	1200-1/2 457 (500-1/2)	1200-7/8 457 (500-7/8)		
CIRCLING	1200-1 445 (500-1)	1220-1 465 (500-1)	1240-1 1/2 485 (500-1 1/2)	1360-2 605 (700-2)