

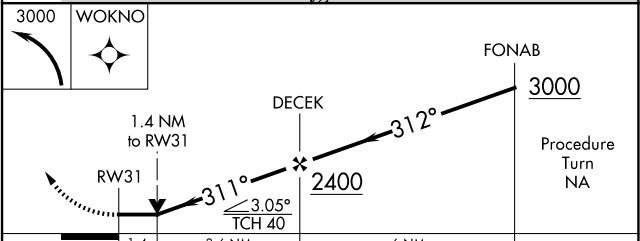
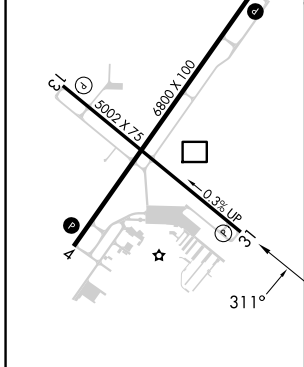
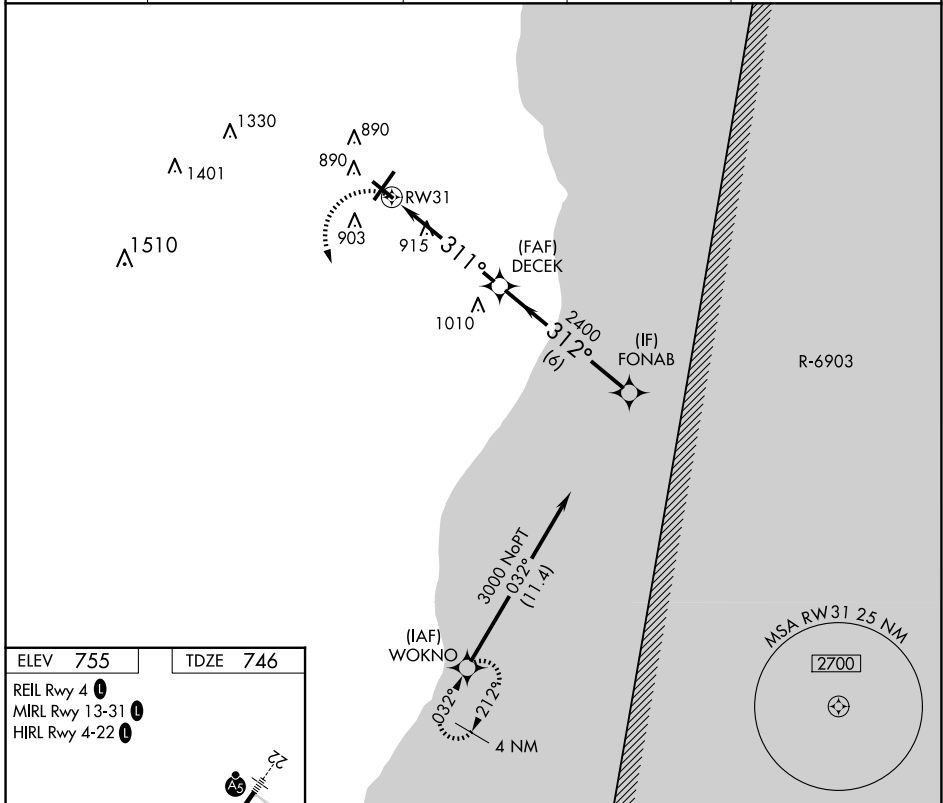
APP CRS <b>311°</b>	Rwy Idg <b>5002</b>
	TDZE <b>746</b>
	Apt Elev <b>755</b>

# RNAV (GPS) RWY 31

SHEBOYGAN COUNTY MEML INTL (SBM)

RNP APCH - GPS.		MISSED APPROACH: Climbing left turn to 3000 direct WOKNO and hold.		
Rwy 31 helicopter visibility reduction below 3/4 SM NA.				

ASOS <b>118,425</b>	MILWAUKEE APP CON <b>127,375 263,075</b>	GCO <b>121,725</b>	CLNC DEL <b>127,375</b>	UNICOM <b>122.7 (CTAF)</b>
------------------------	---------------------------------------------	-----------------------	----------------------------	-------------------------------



CATEGORY	A	B	C	D
LNAV MDA	1260-1 514 (600-1)	1260-1 514 (600-1)	1260-1 514 (600-1)	1260-1 514 (600-1)
<input checked="" type="checkbox"/> CIRCLING	1260-1 505 (600-1)	1260-1 505 (600-1)	1260-1 505 (600-1)	1360-2 605 (700-2)

EC-3, 20 FEB 2025 to 20 MAR 2025

EC-3, 20 FEB 2025 to 20 MAR 2025