

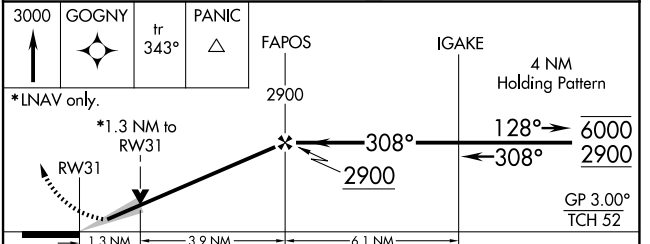
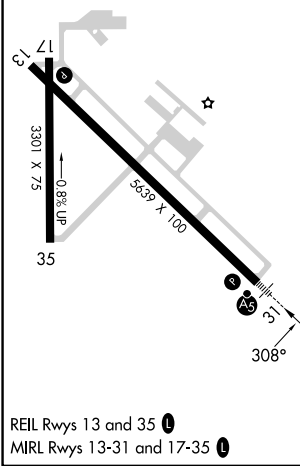
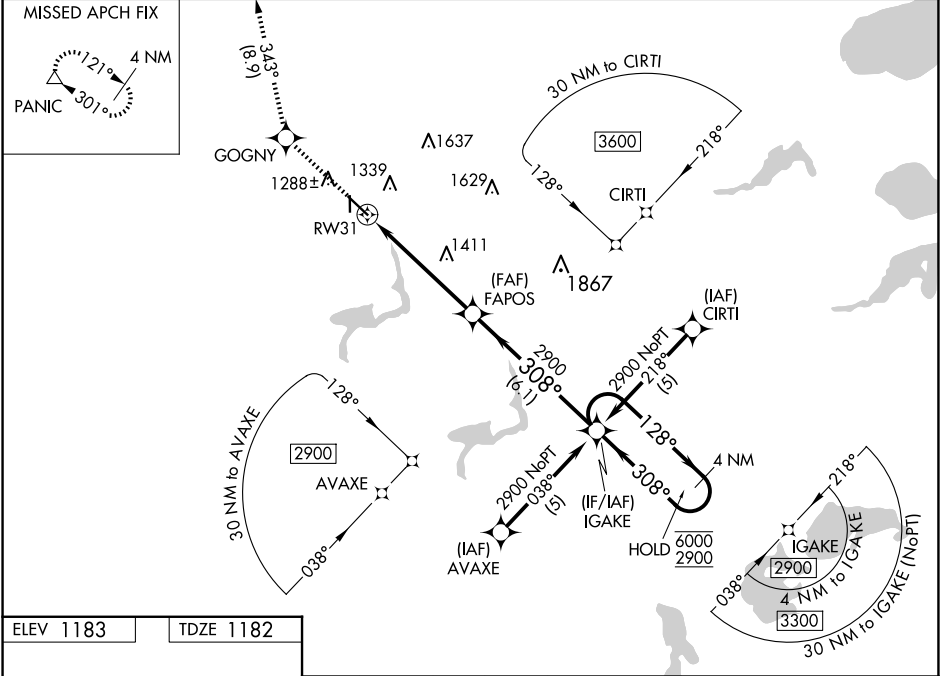
WAAS CH 42614 W31A	APP CRS 308°	Rwy Idg 5639 TDZE 1182 Apt Elev 1183
--	------------------------	---

RNAV (GPS) RWY 31

FERGUS FALLS MUNI/EINAR MICKELSON FLD (FFM)

RNP APCH-GPS.	MALSR 	MISSED APPROACH: Climb to 3000 direct GOGNY and on track 343° to PANIC and hold.
<p> For uncompensated Baro-VNAV systems, LNAV/VNAV NA below -17°C or above 54°C. For inop ALS, increase LNAV/VNAV all Cats visibility to 1 SM and LNAV Cat D visibility to 1 3/8 SM.</p>		

AWOS-3PT 119.05	MINNEAPOLIS CENTER 126.1 269.2	UNICOM 122.8 (CTAF) 0
---------------------------	--	---------------------------------



CATEGORY	A	B	C	D
LPV DA		1382-1/2	200 (200-1/2)	
LNAV/VNAV DA		1545-5/8	363 (400-5/8)	
LNAV MDA	1640-1/2	458 (500-1/2)	1640-7/8	458 (500-7/8)
CIRCLING	1640-1 457 (500-1)	1740-1 557 (600-1)	1820-1 3/4 637 (700-1 3/4)	1940-2 1/2 757 (800-2 1/2)

NC-1, 20 FEB 2025 to 20 MAR 2025

NC-1, 20 FEB 2025 to 20 MAR 2025