

WAAS CH 99620 W30A	APP CRS 303°	Rwy Idg TDZE Apt Elev	5001 2294 2296
--	------------------------	-----------------------------	---

RNAV (GPS) RWY 30

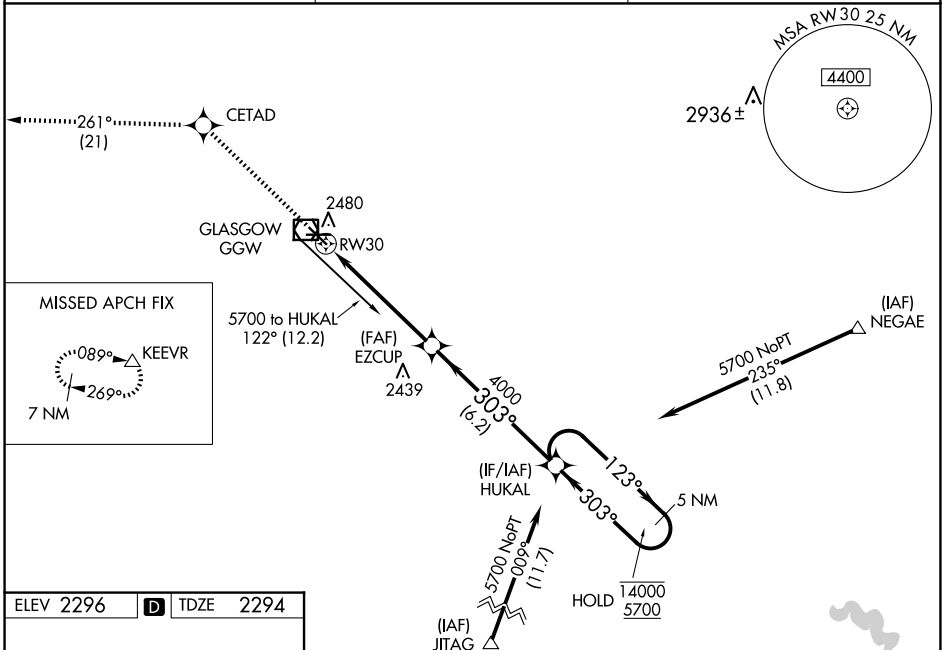
WOKAL FLD/GLASGOW-VALLEY COUNTY (GGW)

RNP APCH.

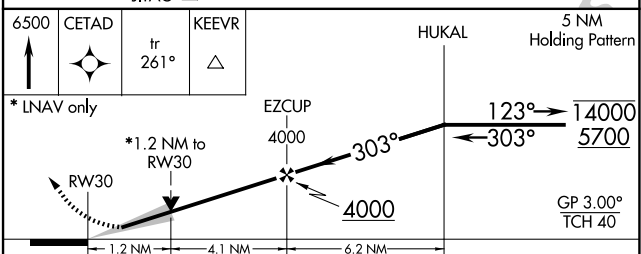
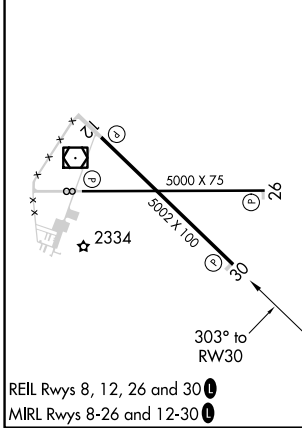
⚠ For uncompensated Baro-VNAV systems, LNAV-VNAV NA below -14°C or above 54°C. When local altimeter setting not received, use Wolf Point altimeter setting and increase LPV DA to 2635 feet and all visibilities 3/8 SM; increase LNAV/VNAV DA to 2728 feet and all visibilities 1/2 SM; increase all MDAs 160 feet and LNAV Cats C/D and Circling Cat D visibility 1/2 SM, Circling Cat C 3/4 SM. Baro-VNAV and VDP NA when using Wolf Point altimeter setting.

MISSED APPROACH: Climb to 6500 direct CETAD and on track 261° to KEEVR and hold.

ASOS 135.175	SALT LAKE CENTER 126.85 305.2	UNICOM 122.8 (CTAF) 0
------------------------	---	---------------------------------



ELEV 2296	D	TDZE 2294
-----------	----------	-----------



CATEGORY	A	B	C	D
LPV DA		2494-3/4	200 (200-3/4)	
LNAV/VNAV DA		2587-1	293 (300-1)	
LNAV MDA	2700-1	406 (500-1)	2700-1 1/8	406 (500-1 1/8)
CIRCLING	2780-1	484 (500-1)	2780-1 1/2	2900-2 604 (700-2)

NW-1, 20 FEB 2025 to 20 MAR 2025

NW-1, 20 FEB 2025 to 20 MAR 2025