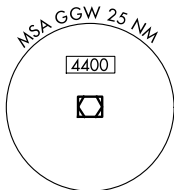


| | | | |
|---|------------------------|-----------------------------|---|
| VOR/DME GGW 113.9 Chan 86 | APP CRS 293° | Rwy Idg TDZE Apt Elev | 5001 2294 2296 |
|---|------------------------|-----------------------------|---|

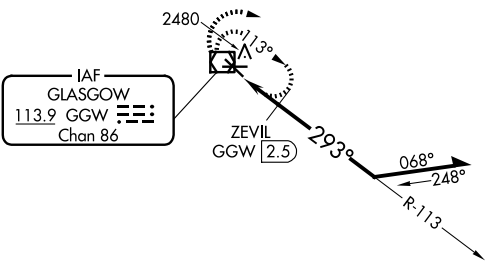
VOR RWY 30

WOKAL FLD/GLASGOW-VALLEY COUNTY (GGW)

| | | |
|------------------------|---|--|
| ▼ ▲ | ZEVIL fix Straight-in minimums NA when using Wolf Point altimeter setting. When local altimeter setting not received, use Wolf Point altimeter setting and increase all MDA 160 feet and increase visibilities all Cats ½ SM. | MISSED APPROACH: Climb to 4000 in GGW VOR/DME holding pattern. |
| ASOS 135.175 | SALT LAKE CENTER 126.85 305.2 | UNICOM 122.8 (CTAF) 0 |



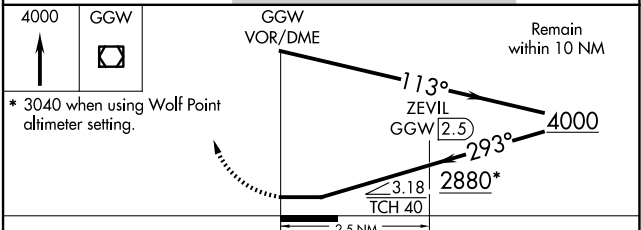
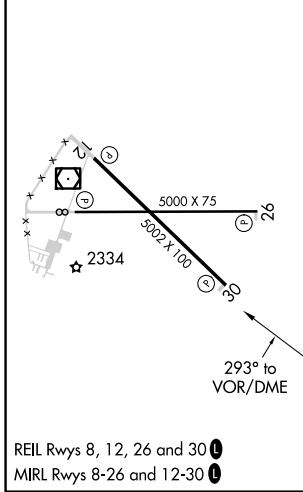
A₃₀₂₂



NW-1, 20 FEB 2025 to 20 MAR 2025

NW-1, 20 FEB 2025 to 20 MAR 2025

| | | |
|-----------|----------|-----------|
| ELEV 2296 | D | TDZE 2294 |
|-----------|----------|-----------|



| CATEGORY | A | B | C | D |
|--------------------|--------|-------------|-------------------------|-----------------------|
| S-30 | 2880-1 | 586 (600-1) | 2880-1¾ | 586 (600-1¾) |
| CIRCLING | 2880-1 | 584 (600-1) | 2880-1¾ 584 (600-1¾) | 2900-2 604 (700-2) |
| ZEVIL FIX MINIMUMS | | | | |
| S-30 | 2740-1 | 446 (500-1) | 2740-1⅜ | 446 (500-1⅜) |
| CIRCLING | 2780-1 | 484 (500-1) | 2780-1½ 484 (500-1½) | 2900-2 604 (700-2) |

VOR RWY 30