

WAAS CH 7207 W02A	APP CRS 023°	Rwy Idg TDZE Apt Elev	5197 826 827
---------------------------------------	------------------------	-----------------------------	---

RNAV (GPS) RWY 2

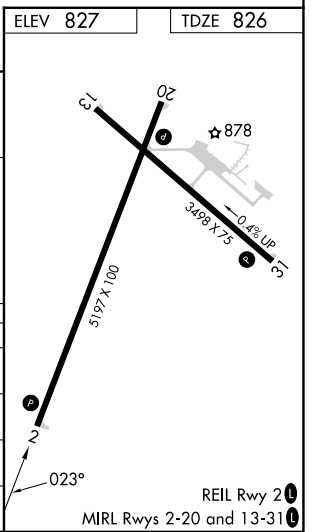
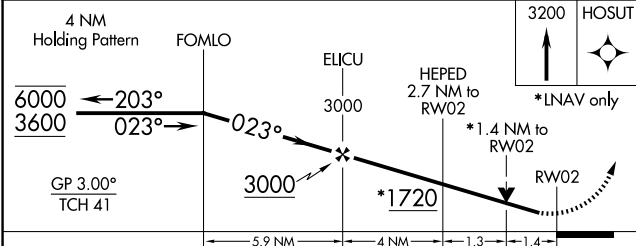
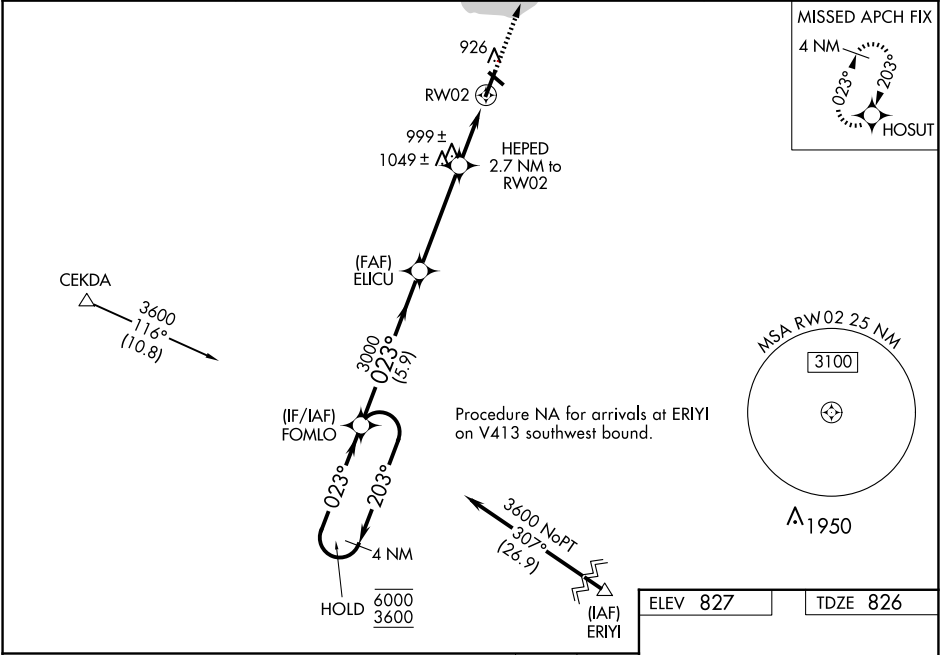
JOHN F KENNEDY MEML (ASX)

RNP APCH.

⚠ For uncompensated Baro-VNAV systems, LNAV/VNAV NA below -28°C or above 54°C.
⚠ Rwy 2 helicopter visibility reduction below ¼ SM NA. Baro-VNAV and VDP NA when using Ironwood altimeter setting. When local altimeter setting not received, use Ironwood altimeter setting and increase all DA 132 feet and all MDAs 140 feet; increase LPV all Cats and LNAV Cat C/D visibility ⅓ SM, LNAV/VNAV all Cats and Circling Cat C/D visibility ½ SM.

MISSED APPROACH:
Climb to 3200 direct HOSUT and hold.

ASOS 126.775	MINNEAPOLIS CENTER 126.45 276.4	GCO 122.25	UNICOM 122.8 (CTAF) 0
------------------------	---	----------------------	--



CATEGORY	A	B	C	D
LPV DA		1076-1	250 (300-1)	
LNAV/VNAV DA		1103-1	277 (300-1)	
LNAV MDA	1300-1	474 (500-1)	1300-1¾	474 (500-1¾)
C CIRCLING	1300-1	473 (500-1)	1440-1¾ 613 (700-1¾)	1560-2¼ 733 (800-2¼)

EC-3, 20 FEB 2025 to 20 MAR 2025

EC-3, 20 FEB 2025 to 20 MAR 2025