

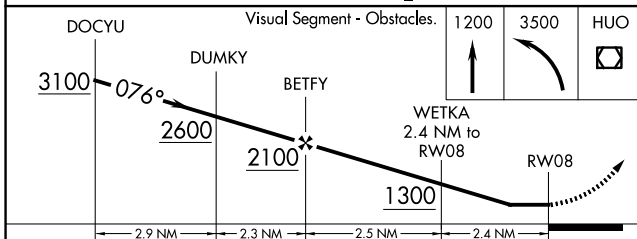
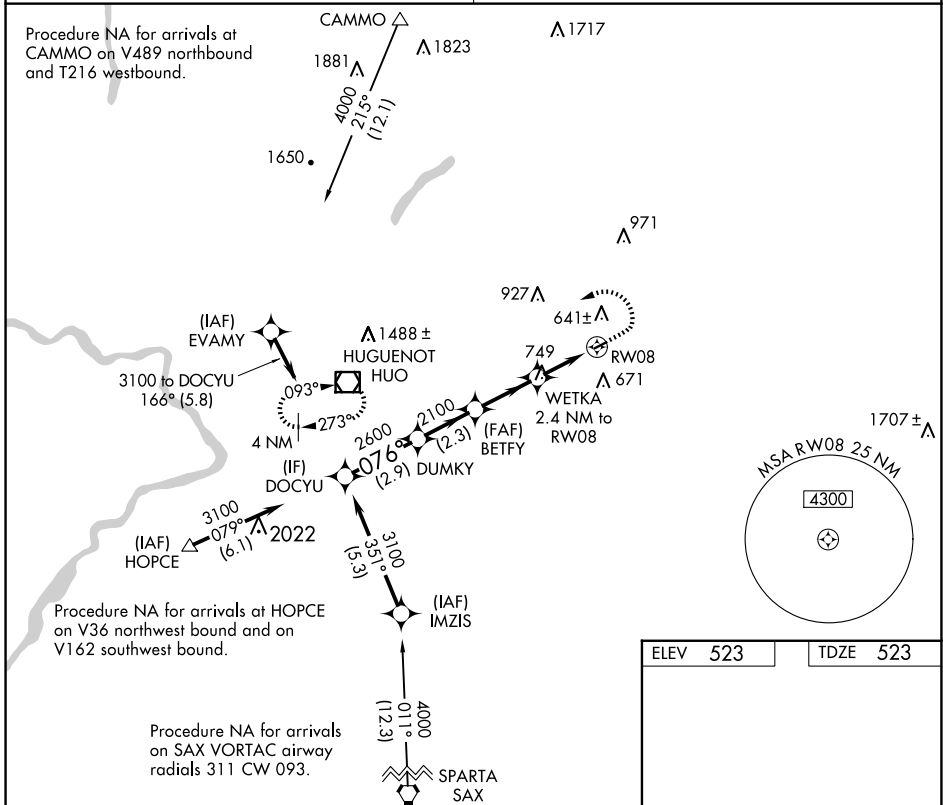
APP CRS	Rwy Idg	2247
076°	TDZE	523
	Apt Elev	523

RNAV (GPS) RWY 8

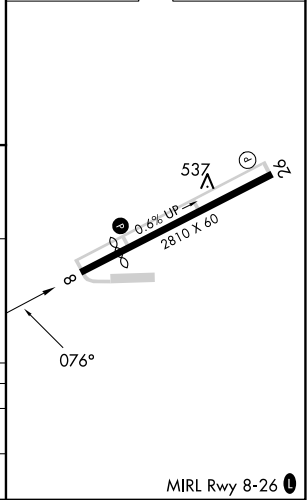
RANDALL (Ø6N)

RNP APCH.	<p>Procedure NA at night. Use Newburgh altimeter setting, when not received, use Montgomery altimeter setting. Rwy 8 helicopter visibility reduction below 1 SM NA.</p>	<p>MISSED APPROACH: Climb to 1200 then climbing left turn to 3500 direct HYO VOR/DME and hold, continue climb-in-hold to 3500.</p>
-----------	--	--

<p>NEW YORK APP CON</p> <p>132.75 363.1</p>	<p>UNICOM</p> <p>122.8 (CTAF) 0</p>
--	--



ELEV 523	TDZE 523
----------	----------



CATEGORY	A	B	C	D
LNAV MDA	1140-1 617 (700-1)		NA	
CIRCLING	1140-1 617 (700-1)		NA	

NE-2, 20 FEB 2025 to 20 MAR 2025

NE-2, 20 FEB 2025 to 20 MAR 2025