

WAAS CH 86833 W17A	APP CRS 173°	Rwy Idg TDZE Apt Elev	5701 2918 2918
--	------------------------	-----------------------------	---

RNAV (GPS) RWY 17

PERRYTON OCHILTREE COUNTY (PYX)

RNP APCH - GPS.

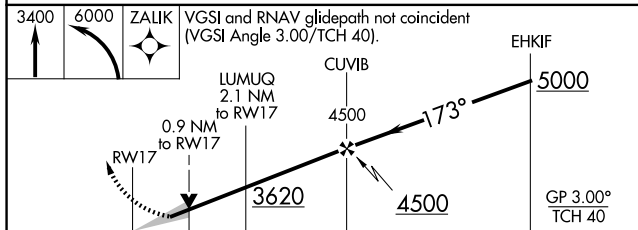
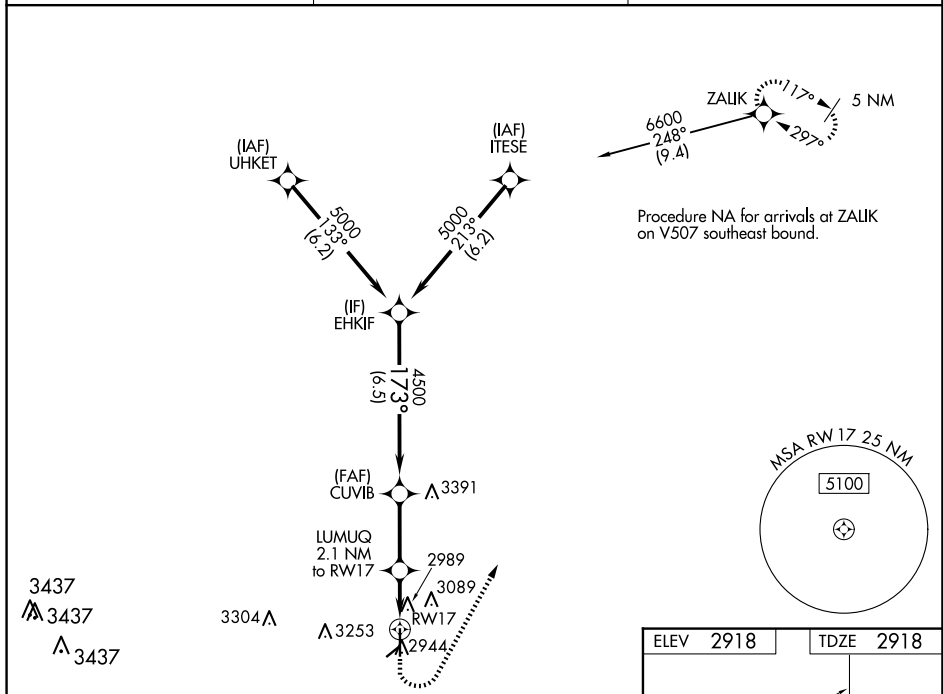
⚠ Circling NA to Rwy 4 and 22. For uncompensated Baro-VNAV systems, LNAV/VNAV NA below -20°C or above 54°C.

MISSED APPROACH: Climb to 3400 then climbing left turn to 6000 direct ZALIK and hold.

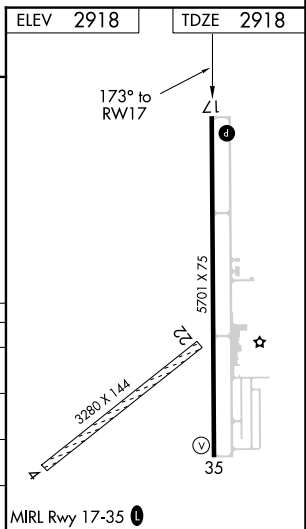
AWOS-3
118.175

KANSAS CITY CENTER
126.95 379.2

UNICOM
122.8 (CTAF) 0



CATEGORY	A	B	C	D
LPV DA	3168-3/4	250 (300-3/4)		NA
LNAV/VNAV DA	3190-7/8	272 (300-7/8)		NA
LNAV MDA	3240-1	322 (400-1)		NA
C CIRCLING	3300-1 382 (400-1)	3580-1 662 (700-1)		NA



SC-2, 20 FEB 2025 to 20 MAR 2025

SC-2, 20 FEB 2025 to 20 MAR 2025