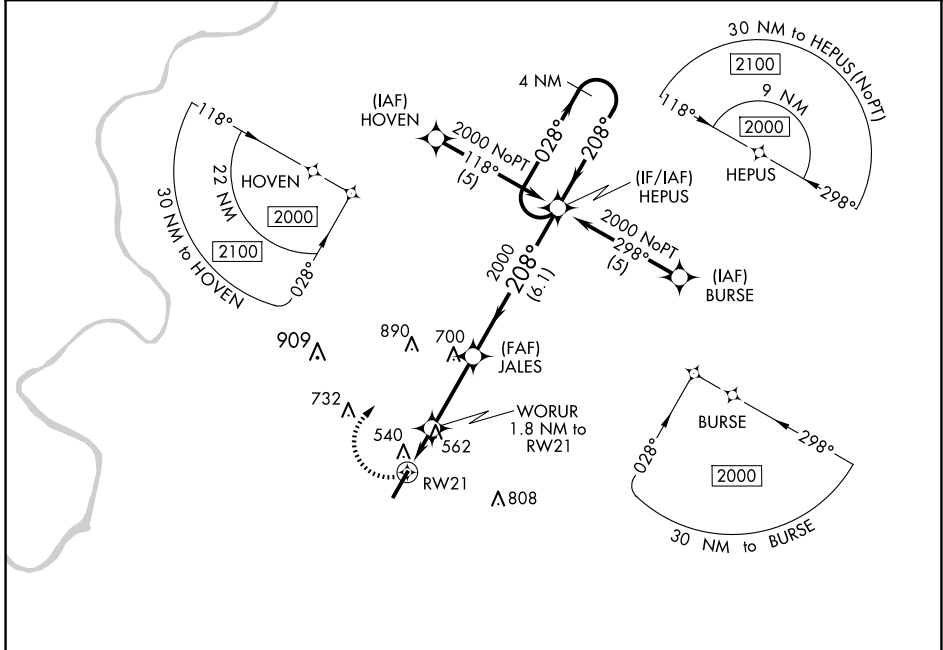


APP CRS	Rwy Idg	<b>6028</b>
<b>208°</b>	TDZE	<b>419</b>
	Apt Elev	<b>419</b>

**RNAV (GPS) RWY 21**  
MONROE COUNTY AEROPLEX (MVC)

RNP APCH.	MISSED APPROACH: Climbing right turn to 2000 direct HEPUS and hold.
<p>▼ Obtain local altimeter setting on CTAF; when not received, use Evergreen Rgnl/Middleton Fld altimeter setting. Procedure NA at night. Rwy 21 helicopter visibility reduction below 1 SM NA.</p> <p>▲ NA</p>	

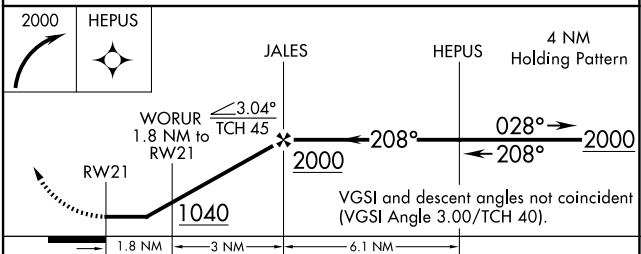
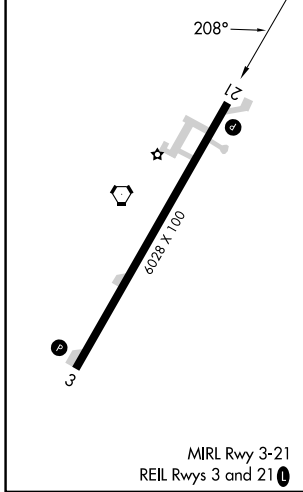
ATLANTA CENTER <b>118.55 267.9</b>	UNICOM <b>123.0 (CTAF)</b>
---------------------------------------	-------------------------------



SE-4, 20 FEB 2025 to 20 MAR 2025

SE-4, 20 FEB 2025 to 20 MAR 2025

ELEV 419	TDZE 419
----------	----------



CATEGORY	A	B	C	D
LNAV/MDA	880-1	461 (500-1)	880-1 <sup>3</sup> / <sub>4</sub> 461 (500-1 <sup>3</sup> / <sub>4</sub> )	880-1 <sup>1</sup> / <sub>2</sub> 461 (500-1 <sup>1</sup> / <sub>2</sub> )
CIRCLING	880-1 461 (500-1)	920-1 501 (600-1)	920-1 <sup>1</sup> / <sub>2</sub> 501 (600-1 <sup>1</sup> / <sub>2</sub> )	1120-2 <sup>1</sup> / <sub>4</sub> 701 (800-2 <sup>1</sup> / <sub>4</sub> )
EVERGREEN RGNL/MIDDLETON FLD ALTIMETER SETTING MINIMUMS				
LNAV/MDA	940-1	521 (600-1)	940-1 <sup>1</sup> / <sub>2</sub> 521 (600-1 <sup>1</sup> / <sub>2</sub> )	940-1 <sup>3</sup> / <sub>4</sub> 521 (600-1 <sup>3</sup> / <sub>4</sub> )
CIRCLING	940-1 521 (600-1)	980-1 561 (600-1)	980-1 <sup>1</sup> / <sub>2</sub> 561 (600-1 <sup>1</sup> / <sub>2</sub> )	1180-2 <sup>1</sup> / <sub>2</sub> 761 (800-2 <sup>1</sup> / <sub>2</sub> )