

WAAS CH <b>70409</b> <b>W24A</b>	APP CRS <b>237°</b>	Rwy Idg TDZE <b>1758</b> Apt Elev <b>1763</b>
--	------------------------	---

# RNAV (GPS) RWY 24

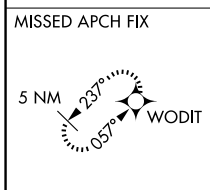
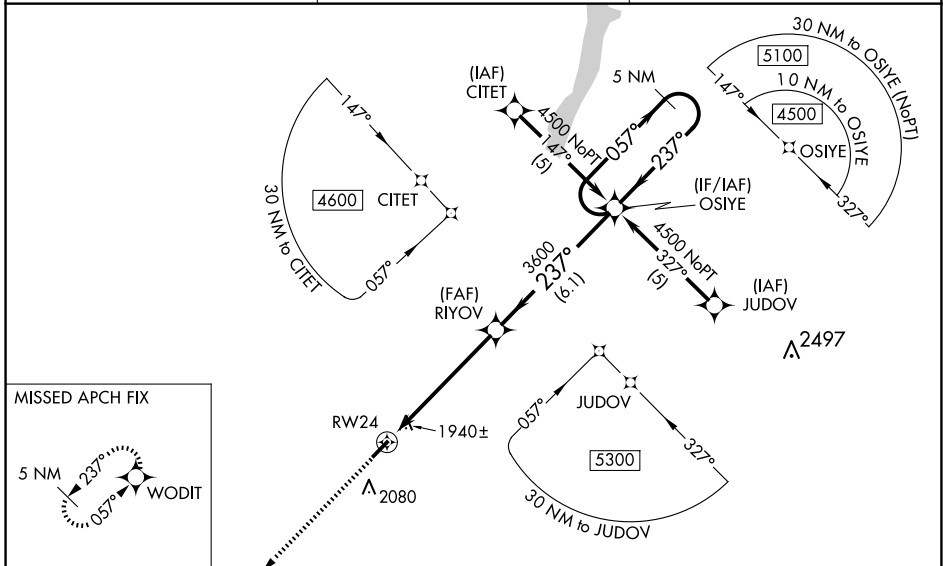
ALBERT S NADER RGNL (N66)

RNP APCH.

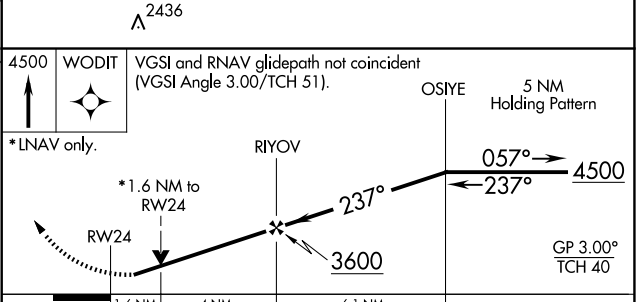
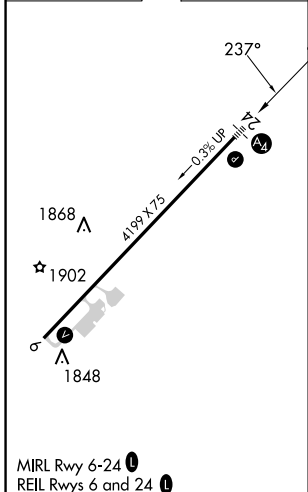
When local altimeter setting not received, use Binghamton altimeter setting and increase LPV DA to 2313 feet, LNAV/VNAV DA to 2380 feet, and all MDAs 140 feet; increase LPV and LNAV/VNAV visibilities all Cats ½ SM. Baro-VNAV NA when using Binghamton altimeter setting. For uncompensated Baro-VNAV systems, LNAV/VNAV NA below -18°C or above 54°C. Rwy 6 helicopter visibility reduction below ¾ SM NA. Inop table does not apply. VDP NA when using Binghamton altimeter setting.

MALS MISSED APPROACH: Climb to 4500 direct WODIT and hold.

AWOS-3 <b>119.575</b>	BOSTON CENTER <b>133.25 279.5</b>	UNICOM <b>122.8 (CTAF) 0</b>
--------------------------	--------------------------------------	---------------------------------



ELEV 1763	TDZE 1758
-----------	-----------



CATEGORY	A	B	C	D
LPV DA	2191-1½	433 (500-1½)		NA
LNAV/VNAV DA	2258-1¾	500 (500-1¾)		NA
LNAV MDA	2300-1	542 (600-1)		NA
CIRCLING	2380-1	617 (700-1)		NA

NE-2, 20 FEB 2025 to 20 MAR 2025

NE-2, 20 FEB 2025 to 20 MAR 2025