

LOC/DME I-SEE 110.5 Chan 42	APP CRS 269°	Rwy Idg TDZE Apt Elev	N/A N/A 388
--	------------------------	-----------------------------	--

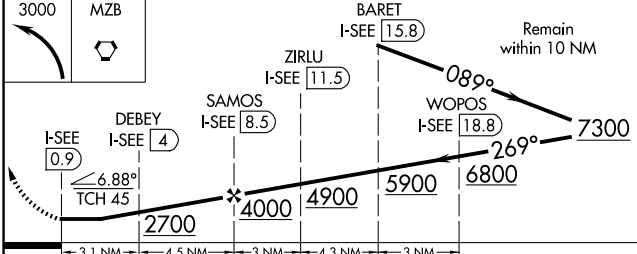
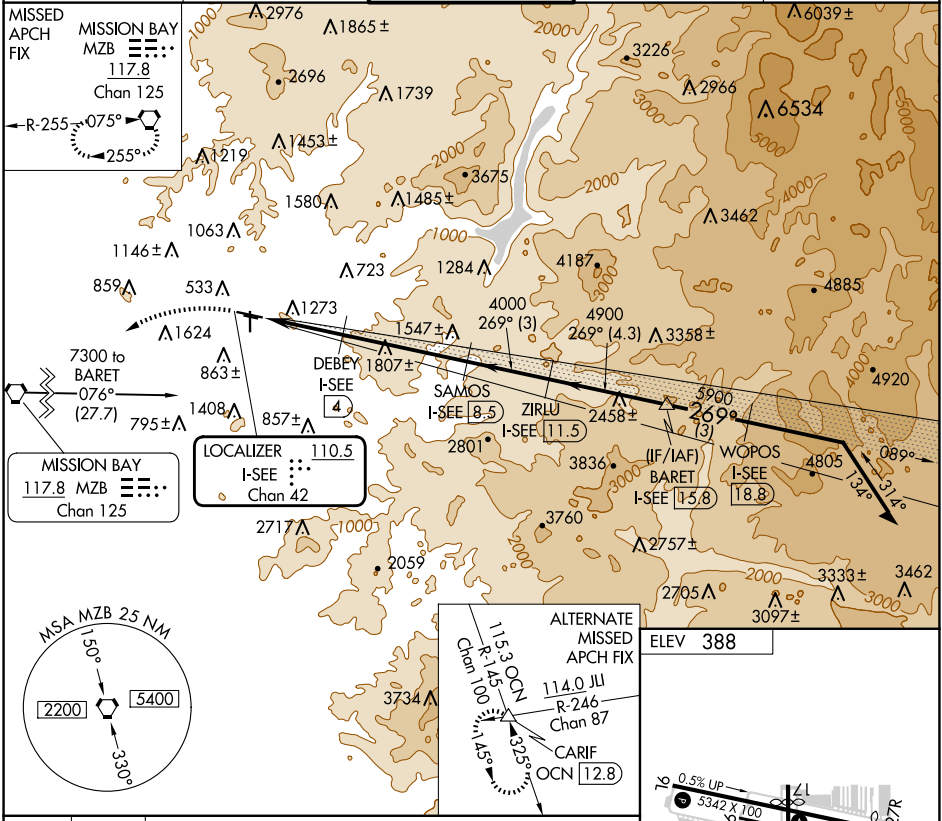
LOC-D
GILLESPIE FLD (SE/E)

DME required.

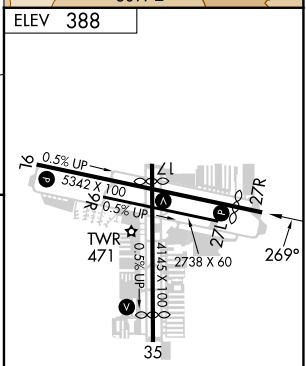
▼ When local altimeter setting not received, use Miramar MCAS altimeter setting and increase all MDA 40 feet. Circling NA northeast of Rwy 27R-17. Circling Rwy 27R, 35 NA at night.

MISSED APPROACH: Climbing left turn to 3000 direct to MZB VORTAC and hold.

ATIS 125.45	SOCAL APP CON 124.35 279.625	GILLESPIE TOWER* 120.7 (CTAF) 257.8	GND CON 121.7	CLNC DEL 125.1
-----------------------	--	---	-------------------------	--------------------------



CATEGORY	A	B	C	D
CIRCLING	1500-1¼ 1112 (1200-1¼)	1500-1½ 1112 (1200-1½)	1940-3	1552 (1600-3)



SW-3, 20 FEB 2025 to 20 MAR 2025

SW-3, 20 FEB 2025 to 20 MAR 2025