

WAAS CH 58204 W17A	APP CRS 168°	Rwy Idg 6501 TDZE 17 Apt Elev 17
--	------------------------	---

RNAV (GPS) RWY 17

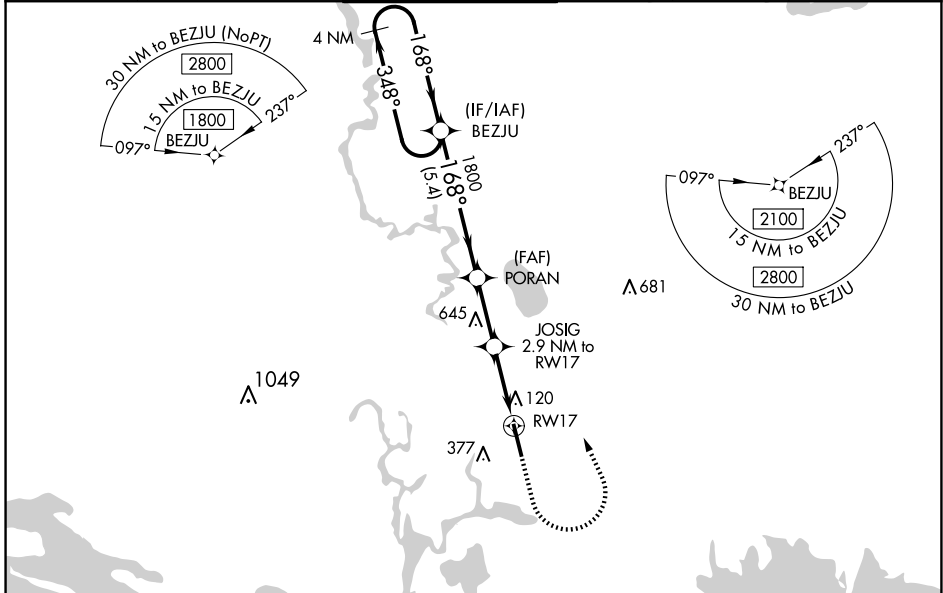
TRENT LOTT INTL (PQL)

RNP APCH - GPS.

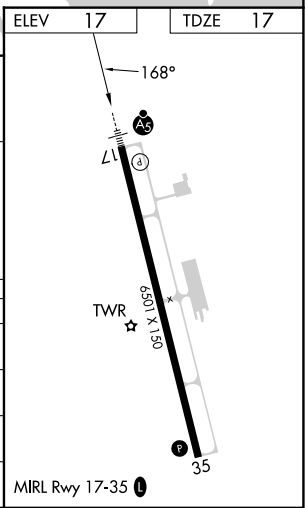
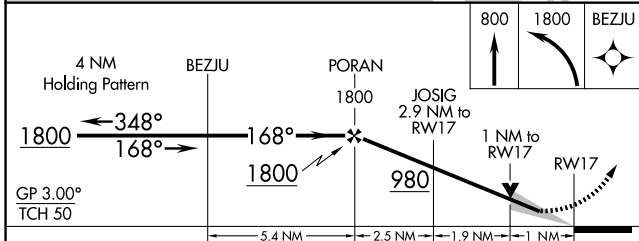
▼ For uncompensated Baro-VNAV systems, LNAV/VNAV NA below -5°C or above 54°C.
 ▲ When local altimeter setting not received, use Mobile Rgnl altimeter setting; increase LPV DA to 292 feet and LNAV/VNAV DA to 357 feet; increase LNAV/VNAV all visibilities 1/8 SM. Increase all MDA 80 feet and LNAV Cat C/D visibility 1/4 SM and Circling Cat C/D visibility 1/2 SM. Baro-VNAV and VDP NA with Mobile Rgnl altimeter setting. For inop ALS when using Mobile Rgnl altimeter setting increase LPV all Cats visibility to 7/8 SM.

MALSR MISSED APPROACH: Climb to 800 then climbing left turn to 1800 direct BEZJU and hold.

ATIS 135.175	MOBILE APP CON ★ 121.0 307.1	TRENT LOTT TOWER ★ 118.575 (CTAF) 0	GND CON 121.725	CLNC DEL 121.725	UNICOM 122.8
------------------------	--	---	---------------------------	----------------------------	------------------------



ELEV 17	TDZE 17
---------	---------



CATEGORY	A	B	C	D
LPV DA		217-1/2	200 (200-1/2)	
LNAV/VNAV DA		282-1/2	265 (300-1/2)	
LNAV MDA	380-1/2	363 (400-1/2)	380-5/8	363 (400-5/8)
CIRCLING	480-1 463 (500-1)	680-1 663 (700-1)	680-1 3/4 663 (700-1 3/4)	680-2 663 (700-2)

SC-4, 20 FEB 2025 to 20 MAR 2025

SC-4, 20 FEB 2025 to 20 MAR 2025