

| | | |
|--|------------------------|---|
| LOC/DME I-BPK 111.95 Chan 56(Y) | APP CRS 049° | Rwy Idg TDZE 928 Apt Elev 928 |
|--|------------------------|---|

ILS or LOC RWY 5

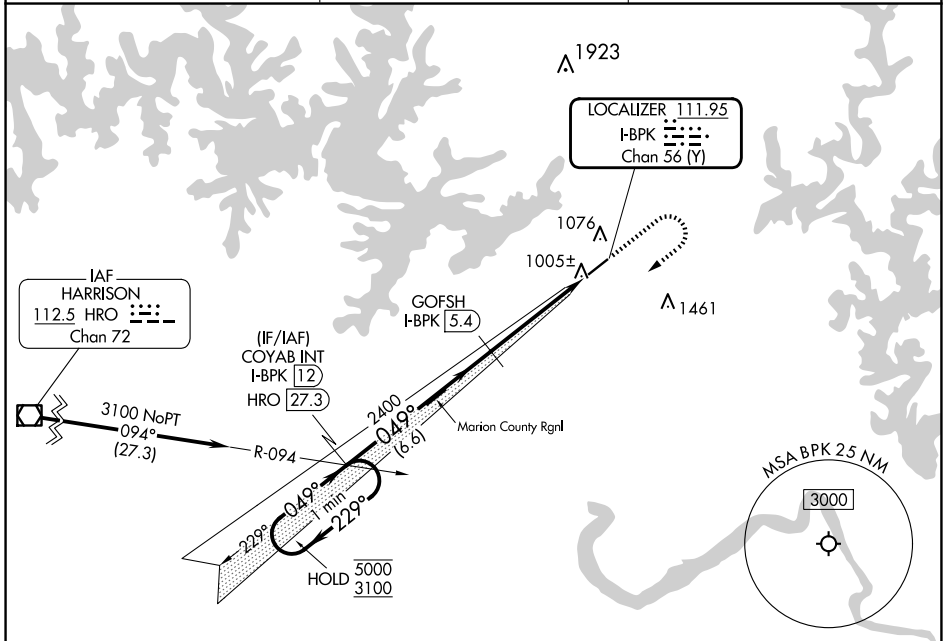
BAXTER COUNTY (BPK)

DME required for LOC only.

⚠ Circling NA for Cat C, southeast of Rwy 5-23. Procedure NA at night.
 ⚠ Rwy 5 helicopter visibility reduction below 1 SM NA.

MISSED APPROACH: Climb to 2000, then climbing right turn to 3100 on heading 230° and HRO R-094 to COYAB INT/I-BPK 12 DME and hold.

| | | |
|------------------------|--|--|
| ASOS 133.975 | MEMPHIS CENTER 126.85 281.55 | UNICOM 123.0 (CTAF) 0 |
|------------------------|--|--|



SC-1, 20 FEB 2025 to 20 MAR 2025

SC-1, 20 FEB 2025 to 20 MAR 2025

| | | | |
|---|--------------------|----------|----------------------|
| ELEV 928 | | TDZE 928 | |
| VGSI and ILS glidepath not coincident (VGSI Angle 3.00/TCH 38). One Minute Holding Pattern COYAB INT I-BPK 12 HRO 27.3 GOFSH I-BPK 5.4 I-BPK 0.9 hdg 230° GS 3.00° TCH 44 5000 ← 229° → 3100 2400 2400 6.6 NM 4.5 NM | | | |
| CATEGORY | A | B | D |
| S-ILS 5 | 1178-1 250 (300-1) | | NA |
| S-LOC 5 | 1260-1 332 (400-1) | | NA |
| CIRCLING | 1400-1 472 (500-1) | | 1460-1½ 532 (600-1½) |
| REIL Rwy 5 and 23 0 MIRL Rwy 5-23 0 | | | |