

APP CRS	Rwy Idg	5000
229°	TDZE	919
	Apt Elev	928

RNAV (GPS) RWY 23

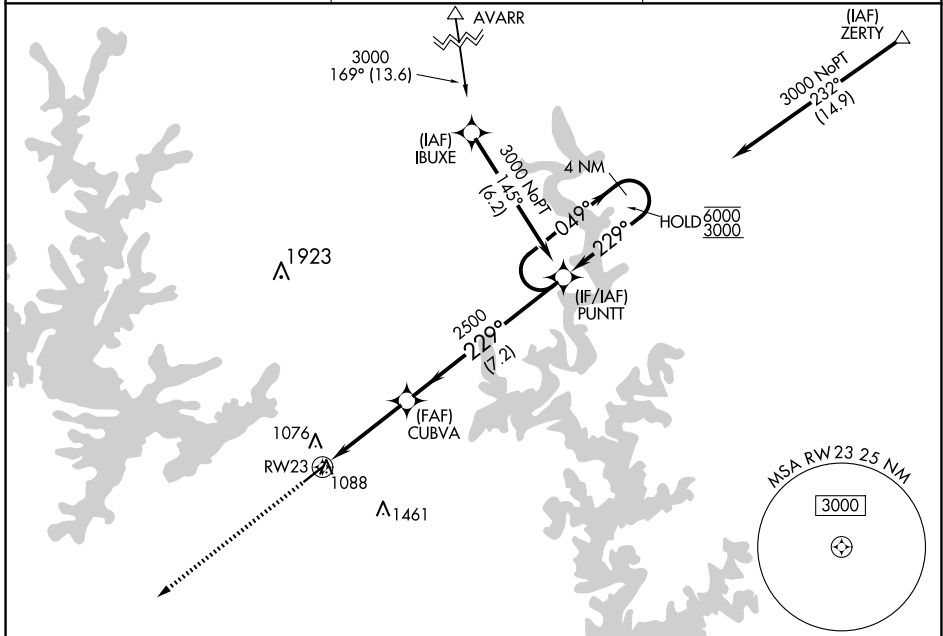
BAXTER COUNTY (BPK)

RNP APCH - GPS.

- ▼ Procedure NA at night. Rwy 23 helicopter visibility reduction below 1 SM NA.
- ▲ Circling NA for Cat C southeast of Rwy 5-23.

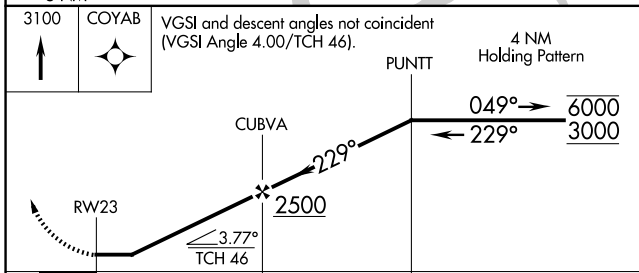
MISSED APPROACH: Climb to 3100 direct COYAB and hold.

ASOS 133.975	MEMPHIS CENTER 126.85 281.55	UNICOM 123.0 (CTAF) 0
------------------------	--	--



SC-1, 20 FEB 2025 to 20 MAR 2025

SC-1, 20 FEB 2025 to 20 MAR 2025



ELEV 928	TDZE 919
----------	----------

CATEGORY	A	B	C	D
LNVA MDA	1360-1	441 (500-1)	1360-1 3/8 441 (500-1 3/8)	NA
CIRCLING	1400-1	472 (500-1)	1460-1 1/2 532 (600-1 1/2)	NA

