

WAAS CH 82026 W04A	APP CRS 044°	Rwy Idg TDZE Apt Elev	5000 1664 1664
--	------------------------	-----------------------------	---

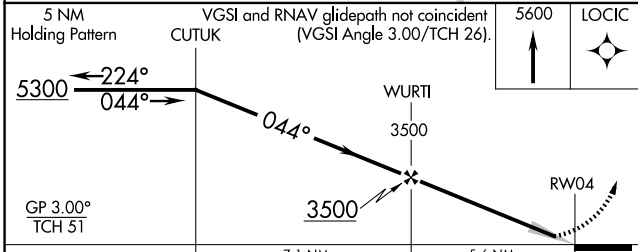
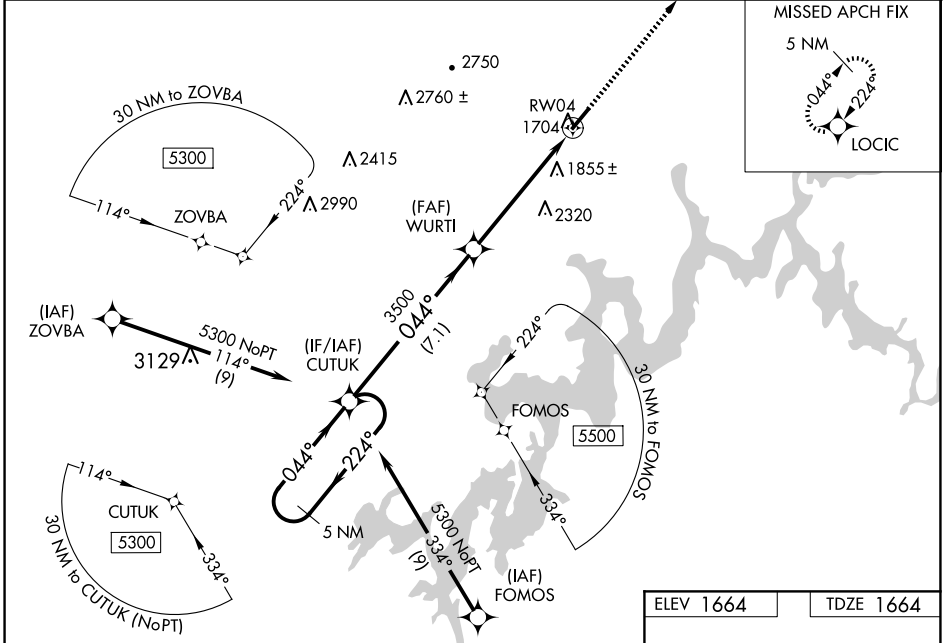
RNAV (GPS) RWY 4

ROCKWOOD MUNI (R.KW)

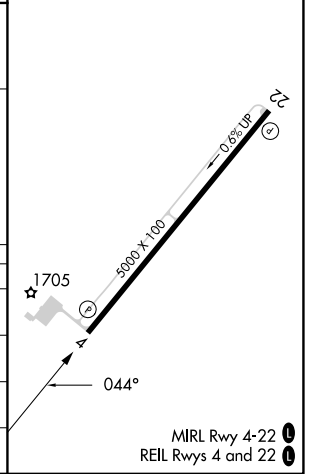
NA Baro-VNAV NA when using Crossville altimeter setting. For uncompensated Baro-VNAV systems, LNAV/VNAV NA below -18°C (0°F) or above 33°C (91°F). DME/DME RNP-0.3 NA. When local altimeter setting not received, use Crossville altimeter setting: increase DA to 1989 feet and LPV and LNAV/VNAV visibility all Cats ¼ SM; increase all MDA 80 feet and LNAV Cat C and D visibility ½ SM and Circling Cat C visibility ½ SM.

MISSED APPROACH: Climb to 5600 direct LOCIC and hold, continue climb-in-hold to 5600.

AWOS-3 118.775	ATLANTA CENTER 133.6 254.3	UNICOM 122.8 (CTAF) 0
--------------------------	--------------------------------------	---------------------------------



ELEV 1664	TDZE 1664
-----------	-----------



CATEGORY	A	B	C	D
LPV DA		1914-¾	250 (300-¾)	
LNAV/VNAV DA		1914-¾	250 (300-¾)	
LNAV MDA	2100-1	436 (500-1)	2100-1¾	436 (500-1¾)
CIRCLING	2100-1 436 (500-1)	2200-1 536 (600-1)	2260-1½ 596 (600-1½)	2780-3 1116 (1200-3)

SE-1, 20 FEB 2025 to 20 MAR 2025

SE-1, 20 FEB 2025 to 20 MAR 2025