

ROCKWOOD, TENNESSEE

AL-5408 (FAA)

24137

VOR/DME HCH 117.6 Chan 123	APP CRS 240°	Rwy Idg TDZE 1662 Apt Elev 1664	5000
------------------------------------------------	------------------------	-----------------------------------------------------	-------------

VOR/DME RWY 22
ROCKWOOD MUNI (RKW)

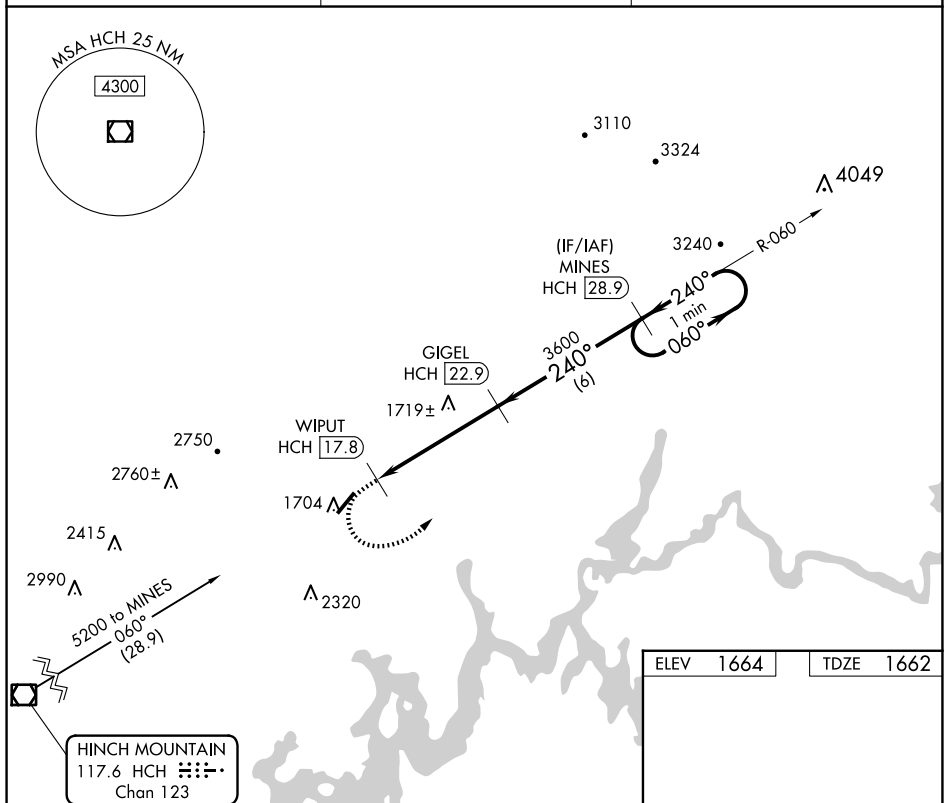
⚠ Circling Rwy 4 NA at night. When local altimeter setting not received, use Crossville altimeter setting: increase all MDA 80 feet and S-22 Cats C and D visibility 1/4 SM, Circling Cat C visibility 1/2 SM.

MISSED APPROACH: Climb to 2400 then climbing left turn to 5200 on heading 020° and HCH R-060 to MINES 28.9 DME and hold.

AWOS-3
118.775

ATLANTA CENTER
133.6 254.3

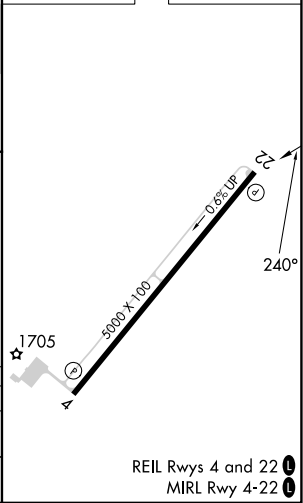
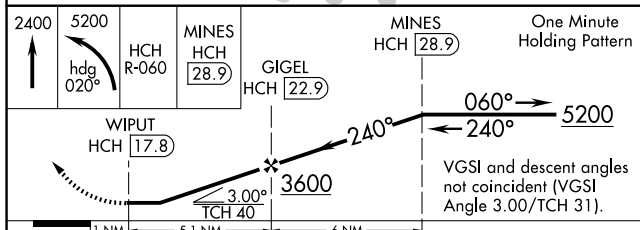
UNICOM
122.8 (CTAF)



SE-1, 20 FEB 2025 to 20 MAR 2025

SE-1, 20 FEB 2025 to 20 MAR 2025

ELEV 1664	TDZE 1662
------------------	------------------



CATEGORY	A	B	C	D
S-22	2160-1 1/4 498 (500-1 1/4)			2160-1 1/2 498 (500-1 1/2)
CIRCLING	2160-1 1/4 496 (500-1 1/4)	2200-1 1/4 536 (600-1 1/4)	2260-1 1/2 596 (600-1 1/2)	2780-3 1116 (1200-3)

REIL Rwys 4 and 22
MIRL Rwy 4-22

ROCKWOOD, TENNESSEE
Amdt 6C 12AUG21

35°55'N-84°41'W

ROCKWOOD MUNI (RKW)
VOR/DME RWY 22