

WAAS CH 81904 W02A	APP CRS 016°	Rwy Idg TDZE Apt Elev	4599 724 724
--	------------------------	-----------------------------	---

RNAV (GPS) RWY 2

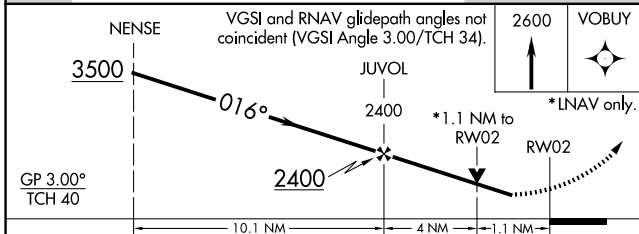
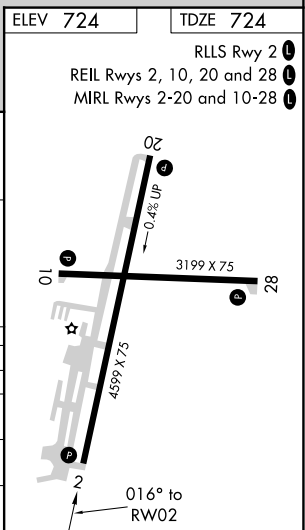
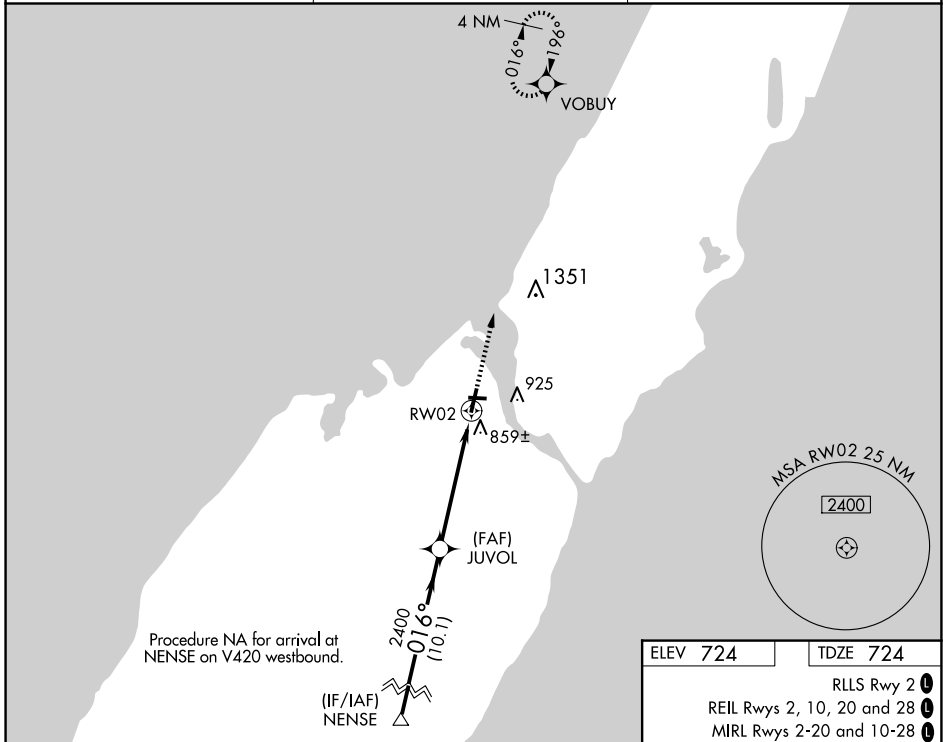
DOOR COUNTY CHERRYLAND (SUE)

RNP APCH.

▼ Rwy 2 helicopter visibility reduction below 3/4 SM NA. For uncompensated Baro-VNAV systems,
▲ LNAV/VNAV NA below -16°C or above 54°C.

MISSED APPROACH:
Climb to 2600 direct
VOBUY and hold.

AWOS-3PT 128.325	GREEN BAY APP CON * 119.25 338.2	UNICOM 122.7(CTAF) 0
----------------------------	--	--------------------------------



CATEGORY	A	B	C	D
LPV DA	1013-1		289 (300-1)	
LNAV/VNAV DA	1164-1½		440 (500-1½)	
LNAV MDA	1120-1	396 (400-1)	1120-1⅛	396 (400-1⅛)
CIRCLING	1280-1	556 (600-1)	1280-1½	1340-2
			556 (600-1½)	616 (700-2)