

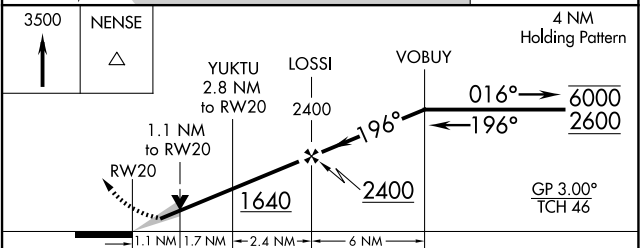
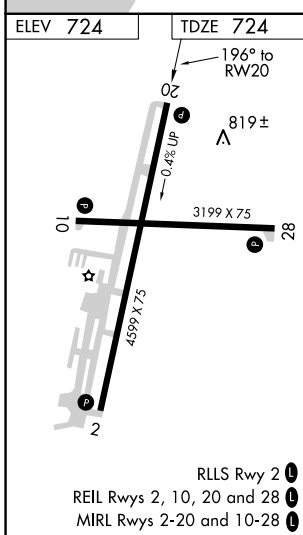
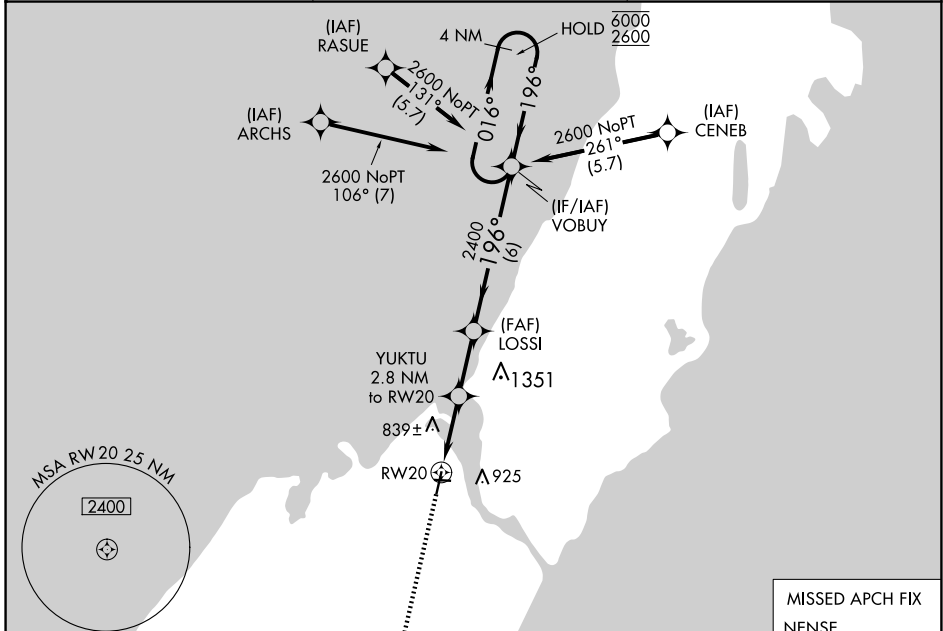
WAAS CH 86304 W20A	APP CRS 196°	Rwy Idg TDZE 724 Apt Elev 724	4599
--	------------------------	---	-------------

RNAV (GPS) RWY 20

DOOR COUNTY CHERRYLAND (SUE)

RNP APCH - GPS.		MISSED APPROACH: Climb to 3500 direct NENSE and hold.
<p>▽ ▲ For uncompensated Baro-VNAV systems, LNAV/VNAV NA below -16°C or above 54°C.</p>		

AWOS-3PT 128.325	GREEN BAY APP CON ★ 119.25 338.2	UNICOM 122.7 (CTAF) 0
----------------------------	--	---------------------------------



CATEGORY	A	B	C	D
LPV DA		974-¾	250 (300-¾)	
LNAV/ VNAV DA		974-¾	250 (300-¾)	
LNAV MDA		1100-1	376 (400-1)	
C CIRCLING	1280-1	556 (600-1)	1280-1½ 556 (600-1½)	1340-2 616 (700-2)

EC-3, 20 FEB 2025 to 20 MAR 2025

EC-3, 20 FEB 2025 to 20 MAR 2025