

APP CRS	Rwy Idg	<b>3199</b>
<b>276°</b>	TDZE	<b>719</b>
	Apt Elev	<b>724</b>

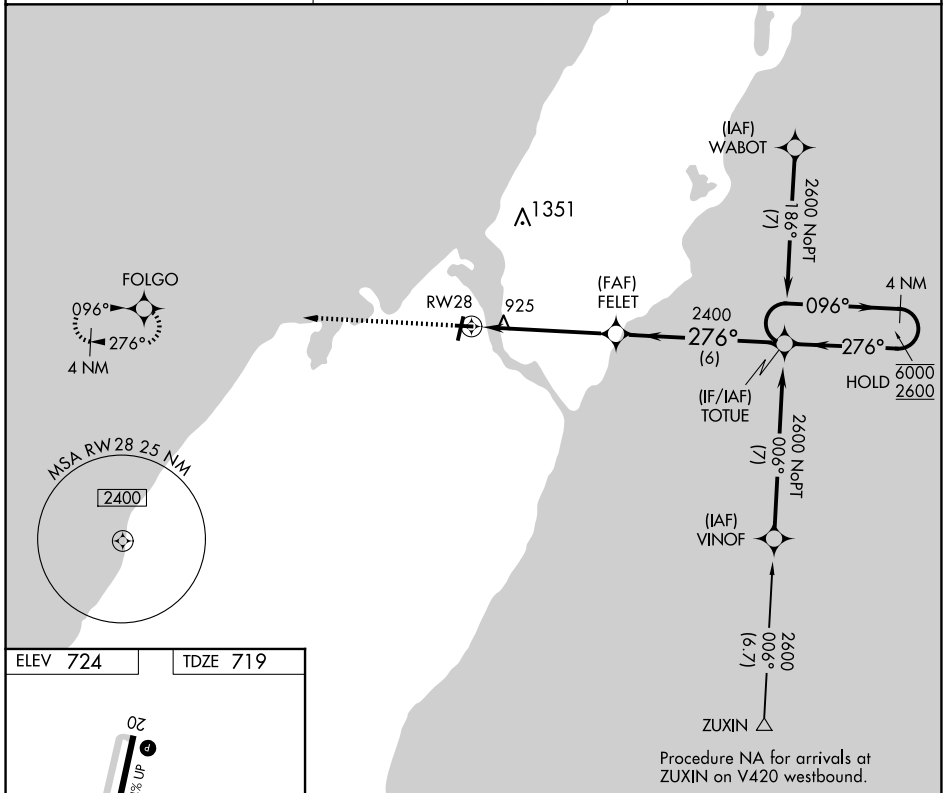
# RNAV (GPS) RWY 28

DOOR COUNTY CHERRYLAND (SUE)

RNP APCH - GPS.  
 Rwy 28 helicopter visibility reduction below 3/4 SM NA.

MISSED APPROACH: Climb to 2600 direct FOLGO and hold.

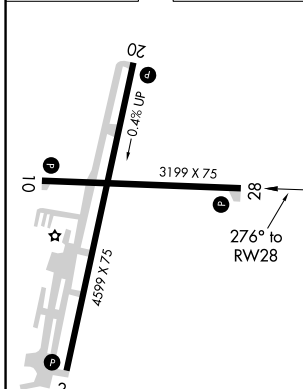
AWOS-3PT <b>128.325</b>	GREEN BAY APP CON ★ <b>119.25 338.2</b>	UNICOM <b>122.7 (CTAF)</b>
----------------------------	--	-------------------------------



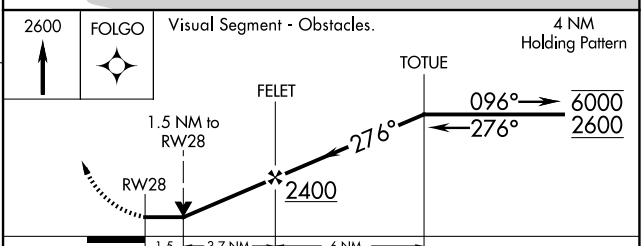
EC-3, 20 FEB 2025 to 20 MAR 2025

EC-3, 20 FEB 2025 to 20 MAR 2025

ELEV 724	TDZE 719
----------	----------



RLLS Rwy 2 REIL Rwys 2, 10, 20 and 28 MIRL Rwys 2-20 and 10-28	(L) (L) (L)
--	-------------------



CATEGORY	A	B	C	D
LNAV MDA	1240-1	521 (600-1)	1240-1½ 521 (600-1½)	NA
CIRCLING	1280-1	556 (600-1)	1280-1½ 556 (600-1½)	NA