

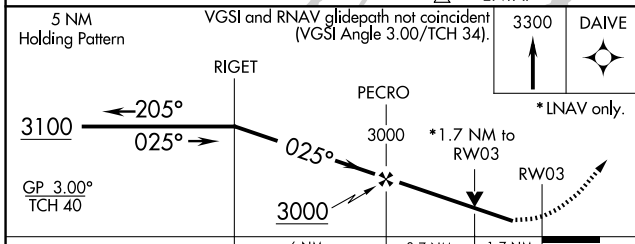
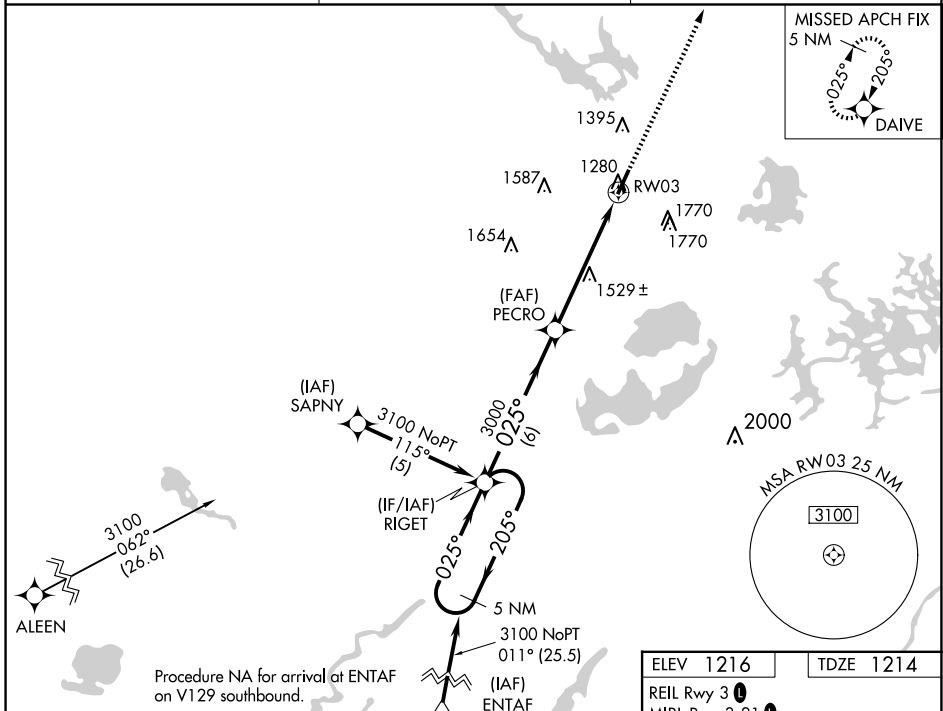
WAAS CH <b>90400</b> <b>W03A</b>	APP CRS <b>025°</b>	Rwy Idg TDZE Apt Elev	<b>5002</b> <b>1214</b> <b>1216</b>
--	------------------------	-----------------------------	---

# RNAV (GPS) RWY 3

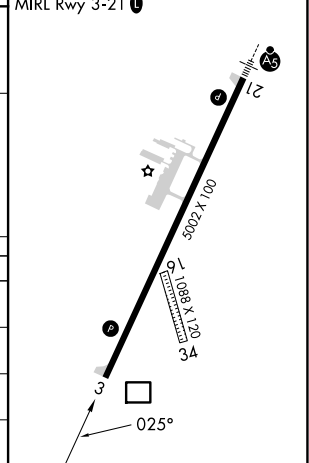
SAWYER COUNTY (HYR)

RNP APCH:	For uncompensated Baro-VNAV systems, LNAV/VNAV NA below -22°C or above 54°C. Rwy 3 helicopter visibility reduction below 3/4 SM NA. Circling NA to Rwy 16 and 34.	MISSED APPROACH: Climb to 3300 direct DAIVE and hold.
-----------	--	---

ASOS <b>118.4</b>	MINNEAPOLIS CENTER <b>126.45 276.4</b>	UNICOM <b>122.8 (CTAF) 0</b>
----------------------	---	---------------------------------



ELEV 1216	TDZE 1214
REIL Rwy 3 0	MIRL Rwy 3-21 0



CATEGORY	A	B	C	D
LPV DA	1514-1		300 (300-1)	
LNAV/VNAV DA	1916-2½		702 (700-2½)	
LNAV MDA	1780-1	566 (600-1)	1780-1½ 566 (600-1½)	1780-1¾ 566 (600-1¾)
CIRCLING	1860-1 644 (700-1)	2060-1¼ 844 (900-1¼)	2120-2¾ 904 (1000-2¾)	2120-3 904 (1000-3)

EC-3, 20 FEB 2025 to 20 MAR 2025

EC-3, 20 FEB 2025 to 20 MAR 2025