

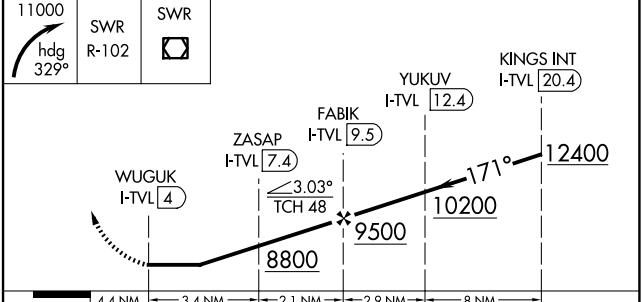
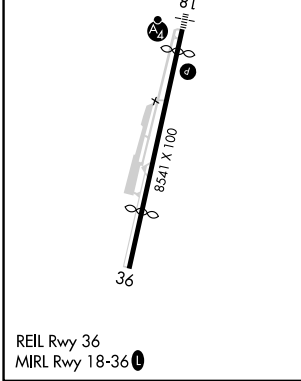
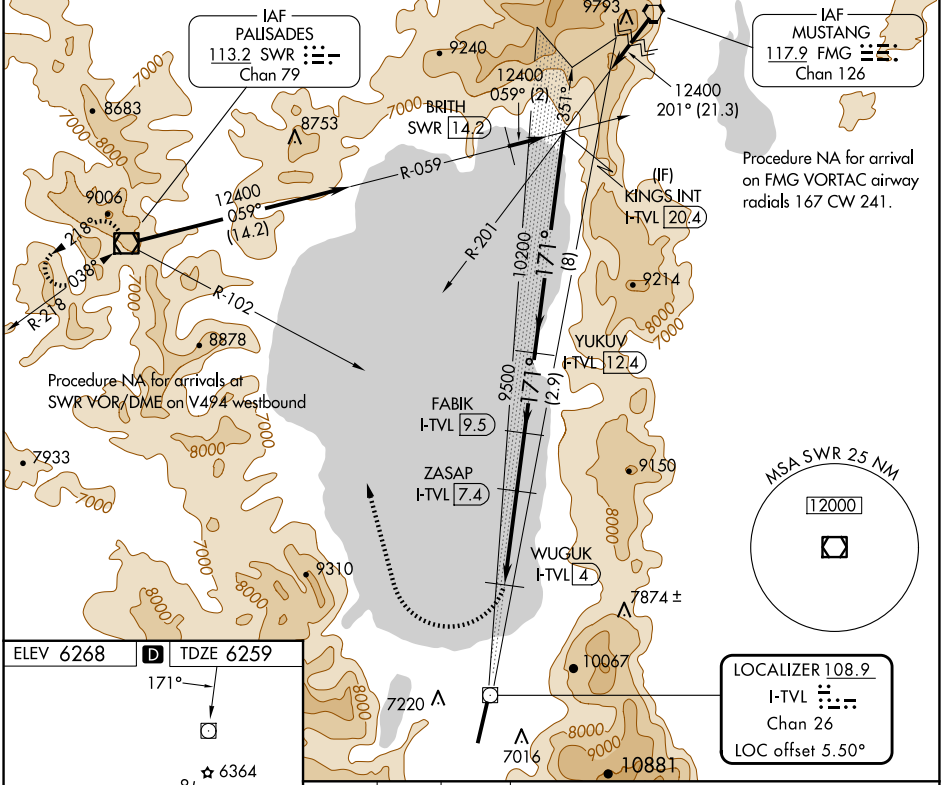
LOC/DME I-TVL <b>108.9</b> Chan 26	APP CRS <b>171°</b>	Rwy Idg TDZE Apt Elev	<b>7017</b> <b>6259</b> <b>6268</b>
--	------------------------	-----------------------------	---

# LDA RWY 18

LAKE TAHOE (TVL)

DME required.		MALSF	MISSED APPROACH: Climbing right turn to 11000 on heading 329° and SWR VOR/DME R-102 to SWR VOR/DME and hold.
<p>NA Rwy 18 helicopter visibility reduction below 3/4 SM NA. When local altimeter setting not received, procedure NA.</p> <p>-13°C</p>			

ASOS <b>124.725</b>	OAKLAND CENTER <b>127.95 316.1</b>	CLNC DEL <b>134.3</b>	CTAF <b>122.85</b>
------------------------	---------------------------------------	--------------------------	-----------------------



CATEGORY	A	B	C	D
S-18	7160-5 901 (900-5)			8520-5 2261 (2300-5)

SW-2, 20 FEB 2025 to 20 MAR 2025

SW-2, 20 FEB 2025 to 20 MAR 2025