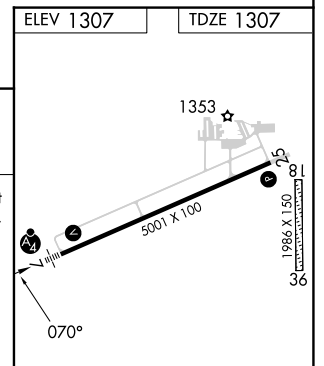
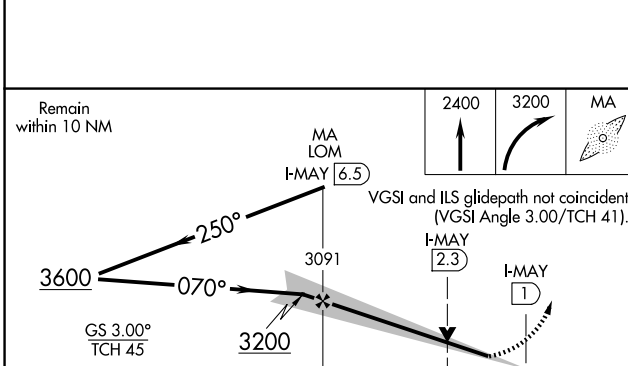
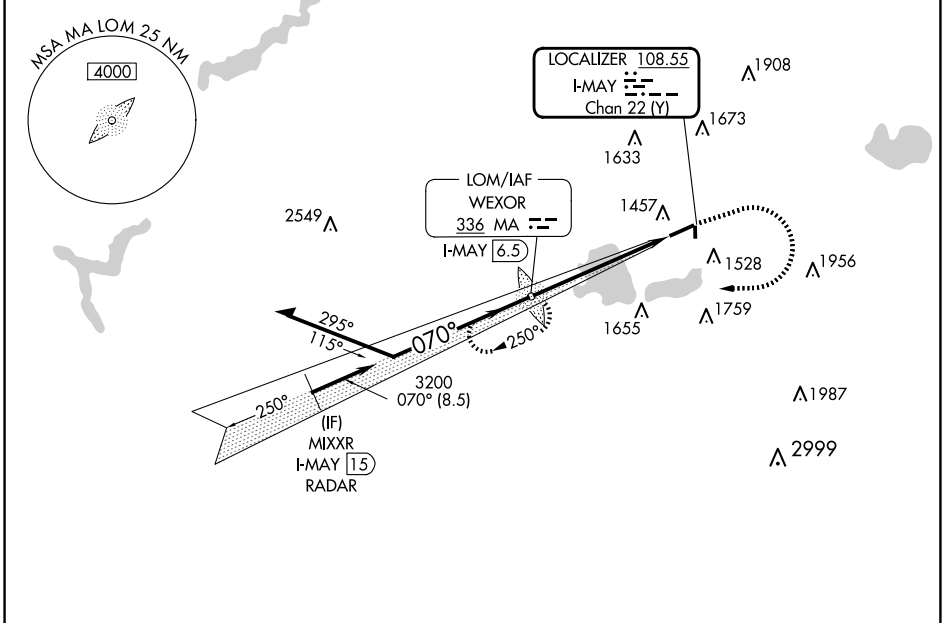


LOC/DME I-MAY <b>108.55</b> Chan <b>22 (Y)</b>	APP CRS <b>070°</b>	Rwy Idg TDZE Apt Elev	<b>5001</b> <b>1307</b> <b>1307</b>
--	------------------------	-----------------------------	---

# ILS or LOC RWY 7

WEXFORD COUNTY (CAD)

ADF required. RADAR required for procedure entry.		MALSF	MISSED APPROACH: Climb to 2400 then climbing right turn to 3200 direct WEXOR. LOM/I-MAY 6.5 DME and hold.
<p><b>▼</b> Circling NA to Rwys 18 and 36. Inop table does not apply to S-ILS 7 all Cats.</p> <p><b>▲</b> NA For inop ALS, increase S-LOC 7 Cat C/D visibility to 1 3/8 SM.</p>			
AWOS-3P <b>128.325</b>	MINNEAPOLIS CENTER <b>132.9 338.3</b>	UNICOM <b>122.8 (CTAF) 0</b>	



CATEGORY	A	B	C	D
S-ILS 7	1507-3/4		200 (200-3/4)	
S-LOC 7	1760-3/4	453 (500-3/4)	1760-1	453 (500-1)
<b>C</b> CIRCLING	1840-1	533 (600-1)	2040-2 733 (800-2)	2060-2 1/2 753 (800-2 1/2)

HIRL Rwy 7-25 <b>0</b>	
REIL Rwys 7 and 25 <b>0</b>	
FAF to MAP 5.5 NM	
Knots	60 90 120 150 180
Min:Sec	5:30 3:40 2:45 2:12 1:50

EC-1, 20 FEB 2025 to 20 MAR 2025

EC-1, 20 FEB 2025 to 20 MAR 2025