

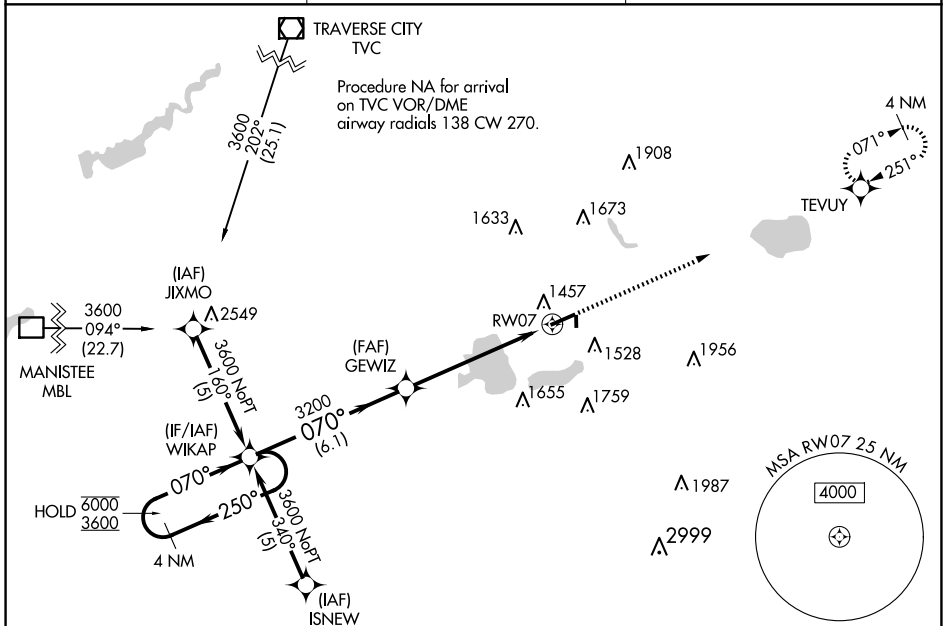
WAAS CH <b>86413</b> <b>W07A</b>	APP CRS <b>070°</b>	Rwy Idg <b>5001</b> TDZE <b>1307</b> Apt Elev <b>1307</b>
--	------------------------	---

# RNAV (GPS) RWY 7

WEXFORD COUNTY (CAD)

RNP APCH - GPS.	MALSF	MISSED APPROACH: Climb to 3000 direct TEVUY and hold.
<p><b>⚠</b> Circling NA to Rwy 18 and 36. Inop table does not apply to LPV all Cats.  <b>⚠</b> For uncompensated Baro-VNAV systems, LNAV/VNAV NA below -24°C or above 54°C. For inop ALS, increase LNAV/VNAV visibility all Cats to 1½ SM.</p>		

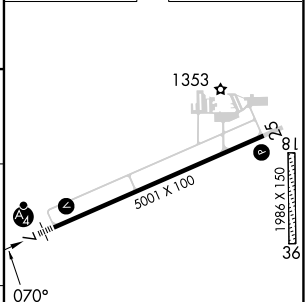
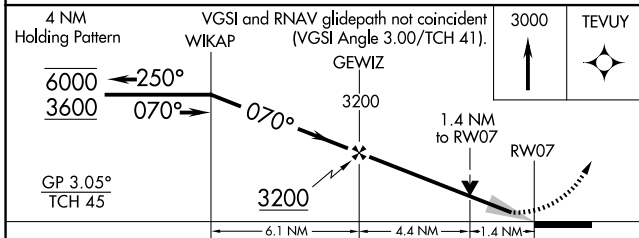
AWOS-3P <b>128.325</b>	MINNEAPOLIS CENTER <b>132.9 338.3</b>	UNICOM <b>122.8 (CTAF) 0</b>
---------------------------	--	---------------------------------



EC-1, 20 FEB 2025 to 20 MAR 2025

EC-1, 20 FEB 2025 to 20 MAR 2025

ELEV 1307	TDZE 1307
-----------	-----------



CATEGORY	A	B	C	D
LPV DA		1507-¾	200 (200-¾)	
LNAV/VNAV DA		1761-1	454 (500-1)	
LNAV MDA	1780-¾	473 (500-¾)	1780-1½	473 (500-1½)
<b>C</b> CIRCLING	1840-1	533 (600-1)	2040-2 733 (800-2)	2060-2½ 753 (800-2½)

HIRL Rwy 7-25 <b>0</b>	REIL Rwy 7 and 25 <b>0</b>
------------------------	----------------------------