

WAAS CH <b>50236</b> <b>W13A</b>	APP CRS <b>126°</b>	Rwy Idg TDZE Apt Elev	<b>5007</b> <b>975</b> <b>975</b>
--	------------------------	-----------------------------	---

# RNAV (GPS) RWY 13

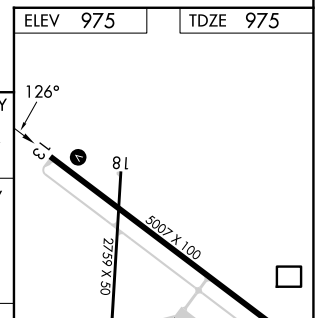
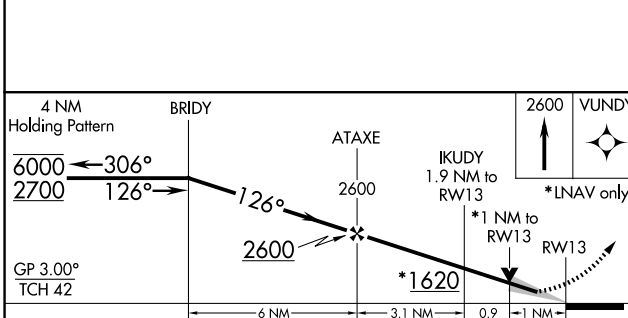
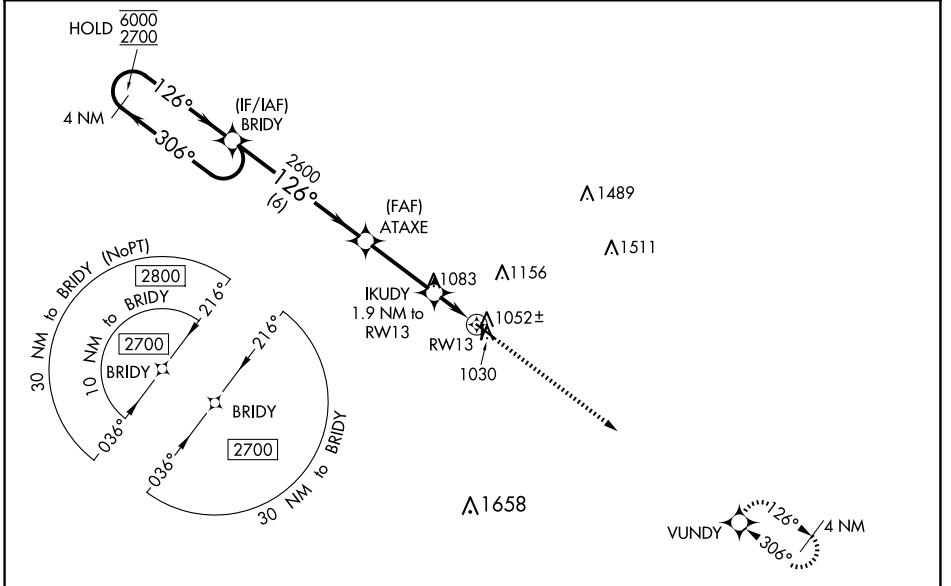
MARSHALLTOWN MUNI (MIW)

RNP APCH.

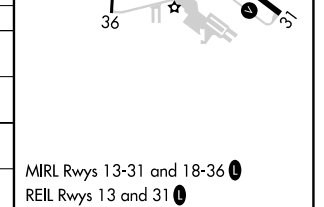
- ⚠ Circling Rwy 18, 36 NA at night. Baro-VNAV and VDP NA when using Grinnell altimeter setting. For uncompensated Baro-VNAV systems, LNAV/VNAV NA below -21°C or above 54°C.
- ⚠ When local altimeter setting not received, use Grinnell altimeter setting and increase all DA 64 feet and all MDA 80 feet; increase LNAV Cats C/D and Circling Cat D visibility ¼ SM.

MISSED APPROACH:  
Climb to 2600 direct  
VUNDY and hold.

ASOS <b>128.325</b>	WATERLOO APP CON * <b>120.9</b>	CLNC DEL <b>120.9</b>	UNICOM <b>122.8 (CTAF) 0</b>
------------------------	------------------------------------	--------------------------	---------------------------------



CATEGORY	A	B	C	D
LPV DA		1225-1	250 (300-1)	
LNAV/VNAV DA		1225-1	250 (300-1)	
LNAV MDA		1320-1	345 (400-1)	
<b>C</b> CIRCLING	1400-1 425 (500-1)	1440-1 465 (500-1)	1460-1½ 485 (500-1½)	1840-2¾ 865 (900-2¾)



NC-3, 20 FEB 2025 to 20 MAR 2025

NC-3, 20 FEB 2025 to 20 MAR 2025