

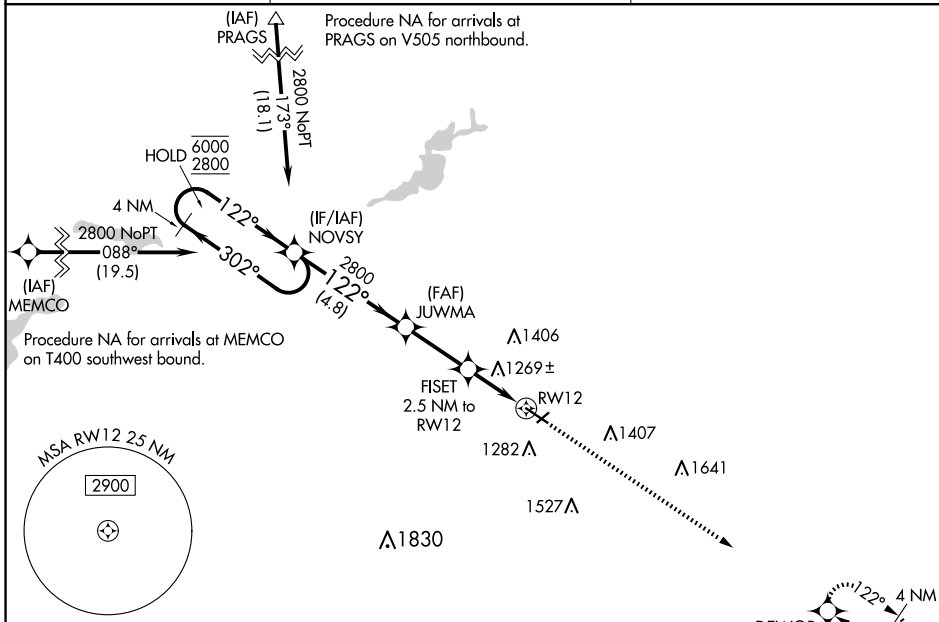
WAAS CH 82627 W12A	APP CRS 122°	Rwy Idg 5500 TDZE 1127 Apt Elev 1145
--	------------------------	---

RNAV (GPS) RWY 12

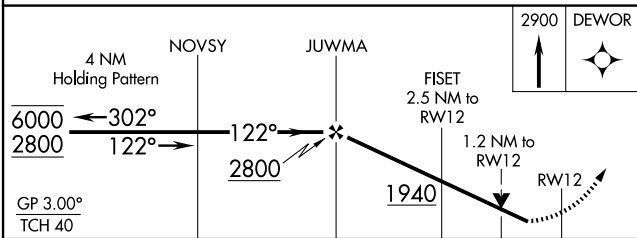
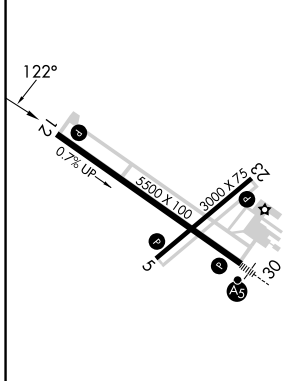
OWATONNA DEGNER RGNL (OWA)

RNP APCH - GPS.	MISSED APPROACH: Climb to 2900 direct DEWOR and hold.
<p>▼ Rwy 12 helicopter visibility reduction below 3/4 SM NA. For uncompensated Baro-VNAV systems, LNAV/VNAV NA below -17°C or above 54°C.</p>	

AWOS-3 128.325	ROCHESTER APP CON * 119.8 251.125	UNICOM 122.7 (CTAF)
--------------------------	---	-------------------------------



ELEV 1145	TDZE 1127
-----------	-----------



CATEGORY	A	B	C	D
LPV DA		1420-7/8	293 (300-7/8)	
LNAV/VNAV DA		1400-7/8	273 (300-7/8)	
LNAV MDA	1520-1	393 (400-1)	1520-1 1/8	393 (400-1 1/8)
C CIRCLING	1640-1 495 (500-1)	1700-1 555 (600-1)	1720-1 1/2 575 (600-1 1/2)	1880-2 1/4 735 (800-2 3/4)

MIRL Rwy 5-23 **Ⓛ**
REIL Rwy 5, 12, and 23 **Ⓛ**
HIRL Rwy 12-30 **Ⓛ**

NC-1, 20 FEB 2025 to 20 MAR 2025

NC-1, 20 FEB 2025 to 20 MAR 2025