

WAAS CH <b>49228</b> <b>W05A</b>	APP CRS <b>050°</b>	Rwy Idg TDZE Apt Elev	<b>3741</b> <b>1041</b> <b>1041</b>
----------------------------------------	------------------------	-----------------------------	-------------------------------------------

# RNAV (GPS) RWY 5

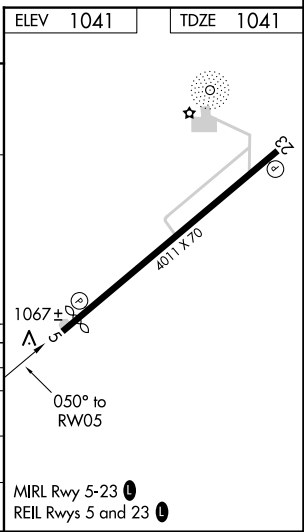
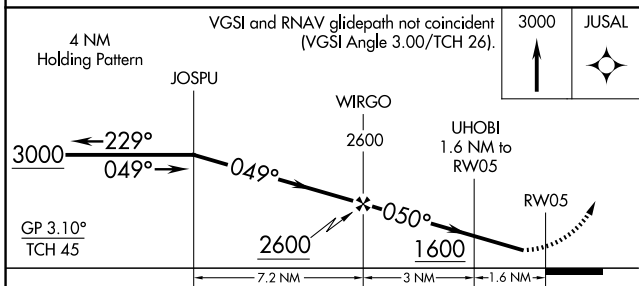
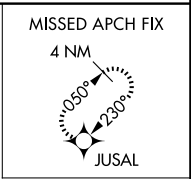
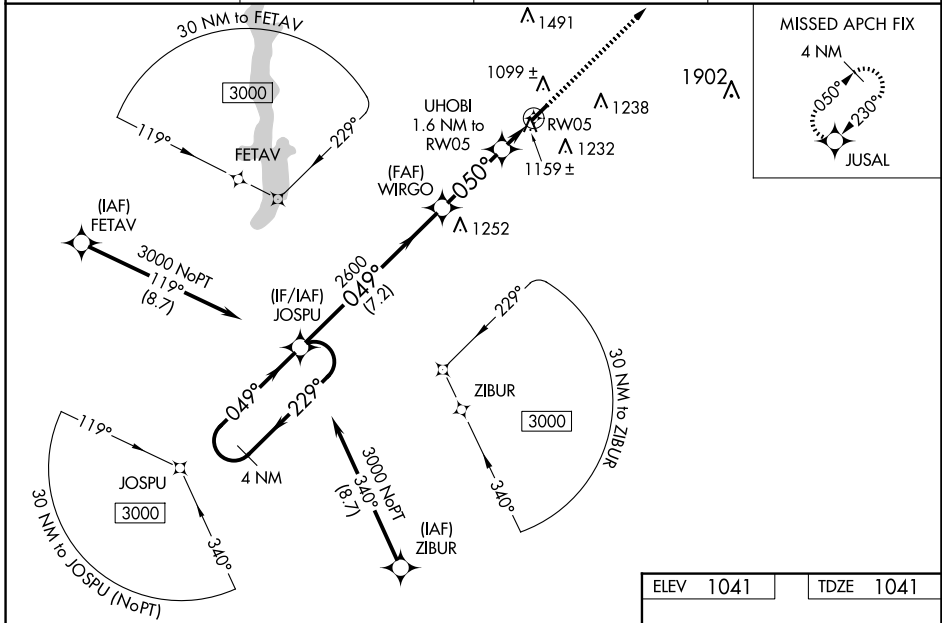
MIAMI UNIVERSITY (OXD)

RNP APCH - GPS.

**NA** Baro-VNAV NA when using Covington altimeter setting. Straight-in/Circling Rwy 5 at low, operational VGSI required, remain on or above VGSI glidepath until threshold. Rwy 5 helicopter visibility reduction below 1 SM NA. When local altimeter setting not received, use Covington altimeter setting: increase LPV DA to 1393 and all visibilities 1/8 SM; increase LNAV/VNAV DA to 1419 and all visibilities 1/4 SM; increase all MDA 100 feet and visibility LNAV Cat C 3/8 SM and Circling Cat C 1/2 SM.

MISSED APPROACH:  
Climb to 3000 direct  
JUSAL and hold.

AWOS-3PT <b>118.625</b>	CINCINNATI APP CON <b>121.0 254.25</b>	UNICOM <b>122.8</b> (CTAF)	<b>122.9</b>
----------------------------	-------------------------------------------	-------------------------------	--------------



CATEGORY	A	B	C	D
LPV DA	1304-1	263 (300-1)		NA
LNAV/VNAV DA	1330-1	289 (300-1)		NA
LNAV MDA	1420-1	379 (400-1)		NA
CIRCLING	1460-1 419 (500-1)	1600-1 559 (600-1)	1600-1½ 559 (600-1½)	NA

EC-2, 20 FEB 2025 to 20 MAR 2025

EC-2, 20 FEB 2025 to 20 MAR 2025