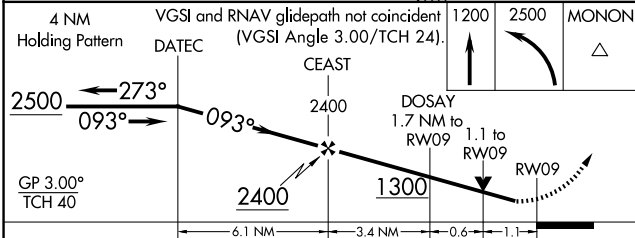
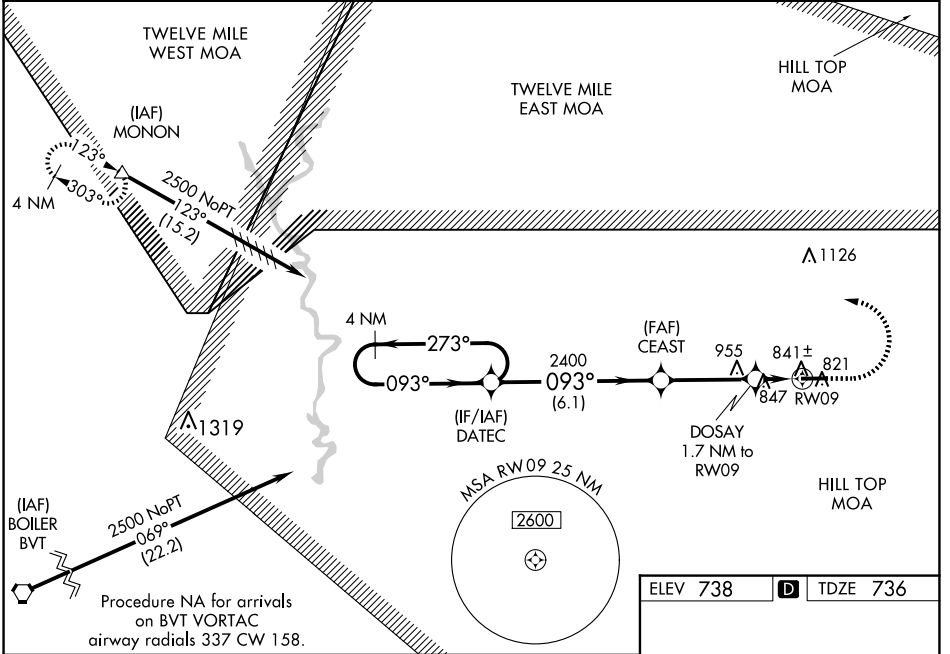


WAAS CH <b>45820</b> <b>W09A</b>	APP CRS <b>093°</b>	Rwy Idg TDZE Apt Elev	<b>5001</b> <b>736</b> <b>738</b>
--	------------------------	-----------------------------	---

**RNAV (GPS) RWY 9**  
LOGANSPORT/CASS COUNTY (GGP)

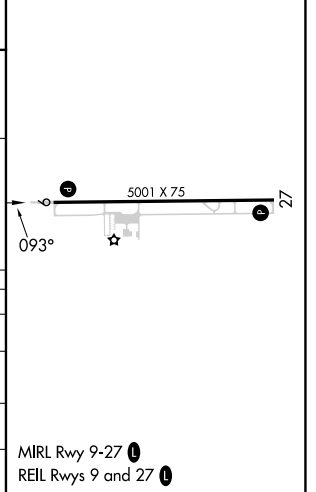
RNP APCH - GPS. ▼ ▲ NA	For uncompensated Baro-VNAV systems, LNAV/VNAV NA below -16°C or above 39°C. When local altimeter setting not received, use Grissom ARB altimeter setting and increase LPV DA to 1026 feet, increase LNAV/VNAV DA to 1057 feet and visibilities all Cats 1/8 SM. Increase all MDAs 40 feet and LNAV visibility Cat C/D 1/8 SM, and Circling visibility Cat D 1/4 SM. Helicopter visibility reduction below 1 SM NA. Baro-VNAV and VDP NA when using Grissom ARB altimeter setting.	MISSED APPROACH: Climb to 1200, then climbing left turn to 2500 direct MONON and hold.
------------------------------	--	---

AWOS-3P <b>118.5</b>	GRISSOM APP CON* <b>121.05 338.275</b>	UNICOM <b>122.8 (CTAF) 0</b>
-------------------------	---	---------------------------------



ELEV 738	<b>D</b>	TDZE 736
----------	----------	----------

CATEGORY	A	B	C	D
LPV DA		991-1	255 (300-1)	
LNAV/VNAV DA		1022-1	286 (300-1)	
LNAV MDA		1100-1	364 (400-1)	
CIRCLING	1180-1 442 (500-1)	1200-1 462 (500-1)	1280-1½ 542 (600-1½)	1400-2 662 (700-2)



MIRL Rwy 9-27 0  
REIL Rwy 9 and 27 0

EC-2, 20 FEB 2025 to 20 MAR 2025

EC-2, 20 FEB 2025 to 20 MAR 2025