

WAAS CH 63014 W29A	APP CRS 290°	Rwy Idg TDZE Apt Elev	5101 1724 1730
--	------------------------	-----------------------------	---

RNAV (GPS) RWY 29

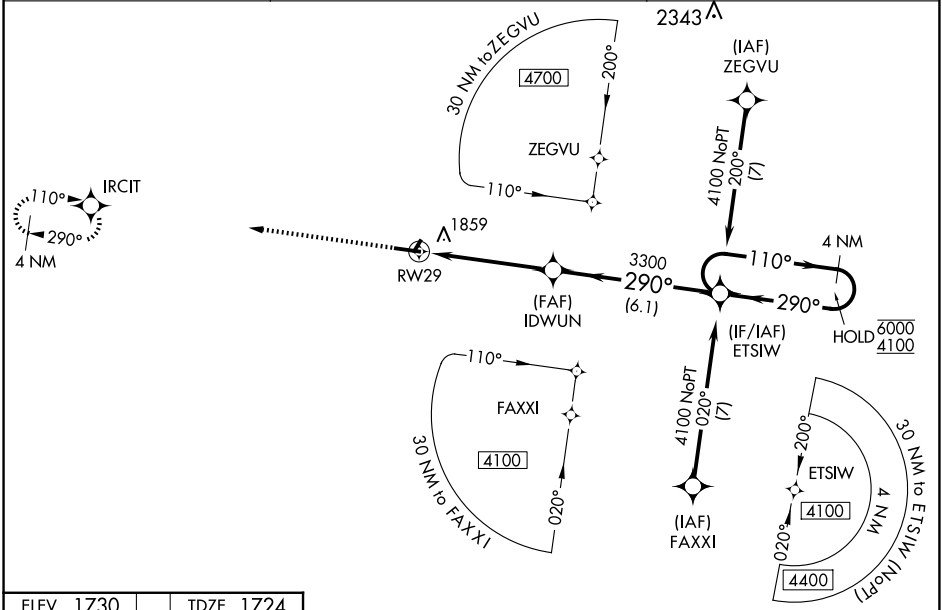
SCHUYLKILL COUNTY/JOE ZERBEY (Z.ER)

RNP APCH - GPS

⚠ NA Circling NA to Rws 4 and 22. Baro-VNAV NA when using Selinsgrove altimeter setting. For uncompensated Baro-VNAV systems, LNAV/VNAV NA below -18°C or above 54°C. VDP NA when using Selinsgrove altimeter setting. When local altimeter setting not received, use Selinsgrove altimeter setting: increase LPV DA to 2156 feet and visibility ½ SM; LNAV/VNAV DA to 2376 feet and visibility ¾ SM; increase all MDAs 240 feet and visibility LNAV Cats C/D ⅝ SM and Circling Cats C/D ½ SM.

MISSED APPROACH:
Climb to 4000 direct
IRCIT and hold.

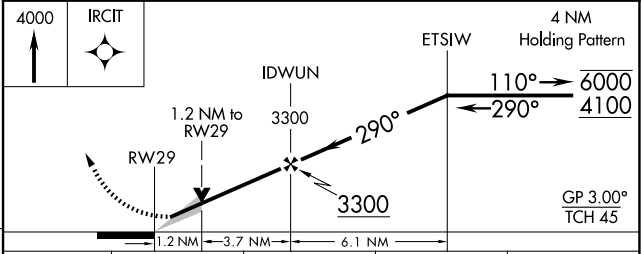
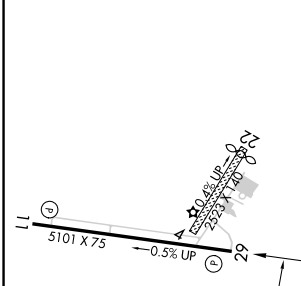
AWOS-3 127.575	HARRISBURG APP CON 118.25 269.45	UNICOM 123.075 (CTAF) ①
--------------------------	--	-----------------------------------



NE-4, 20 FEB 2025 to 20 MAR 2025

NE-4, 20 FEB 2025 to 20 MAR 2025

ELEV 1730	TDZE 1724
-----------	-----------



CATEGORY	A	B	C	D
LPV DA		1924-¾	200 (200-¾)	
LNAV/VNAV DA		2144-1⅛	420 (500-1⅛)	
LNAV MDA	2120-1	396 (400-1)	2120-1⅛	396 (400-1⅛)
C CIRCLING	2160-1 430 (500-1)	2180-1 450 (500-1)	2180-1½ 450 (500-1½)	2280-2 550 (600-2)

REIL Rws 11 and 29 ①
MIRL Rwy 11-29 ①