

|             |          |             |
|-------------|----------|-------------|
| APP CRS     | Rwy Idg  | <b>3798</b> |
| <b>183°</b> | TDZE     | <b>585</b>  |
|             | Apt Elev | <b>585</b>  |

# RNAV (GPS) RWY 18

JAMES CLEMENTS MUNI (3CM)

RNP APCH - GPS.

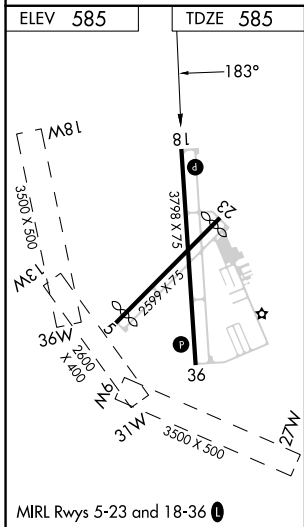
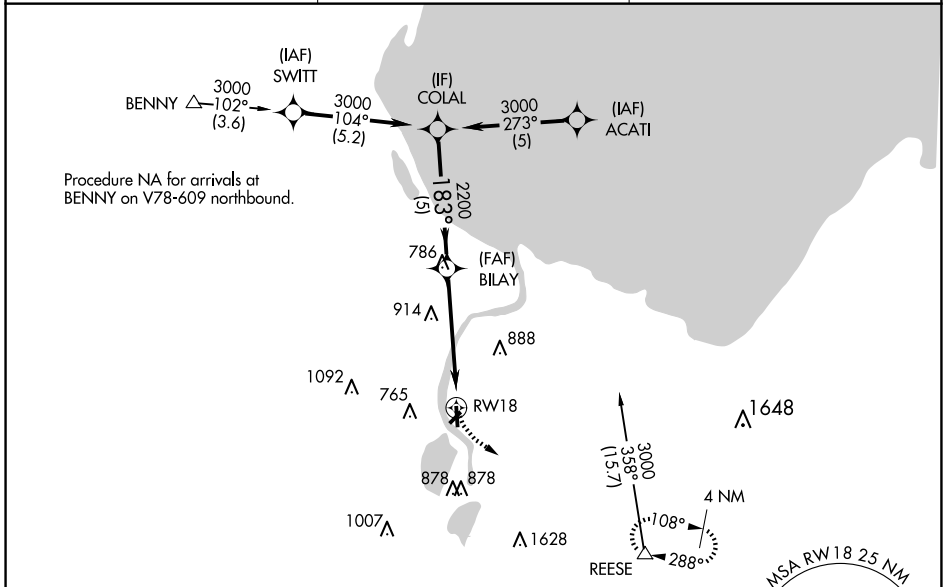
**▼** Circling NA to Rwys 18W, 36W, 13W, 31W, 9W and 27W.  
**▲** Circling NA southeast of Rwys 23 and 36. Rwy 18 helicopter visibility reduction below 1 SM NA. Use Saginaw County H W Browne altimeter setting. Procedure NA at night.

MISSED APPROACH: Climbing left turn to 3000 direct REESE and hold.

HYX AWOS-3PT  
**118.325**

GREAT LAKES APP CON ★  
**120.95 235.625**

UNICOM  
**122.725 (CTAF) ①**



|          |          |             |                       |       |  |        |       |
|----------|----------|-------------|-----------------------|-------|--|--------|-------|
| ELEV 585 | TDZE 585 | COLAL       |                       | BILAY |  | 3000   | REESE |
|          |          | 3000        |                       | 2200  |  | 3000   |       |
|          |          | 183°        |                       | 2.96° |  | TCH 45 |       |
|          |          | 5 NM        |                       | 5 NM  |  |        |       |
| CATEGORY | A        | B           | C                     | D     |  |        |       |
| LNAV MDA | 1260-1   | 675 (700-1) | 1260-2<br>675 (700-2) | NA    |  |        |       |
| CIRCLING | 1260-1   | 675 (700-1) | 1260-2<br>675 (700-2) | NA    |  |        |       |

EC-1, 20 FEB 2025 to 20 MAR 2025

EC-1, 20 FEB 2025 to 20 MAR 2025