

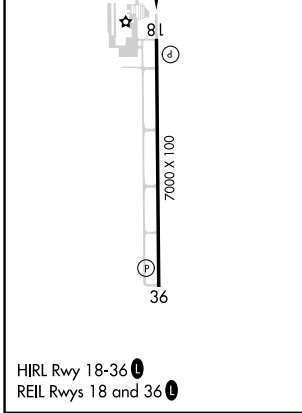
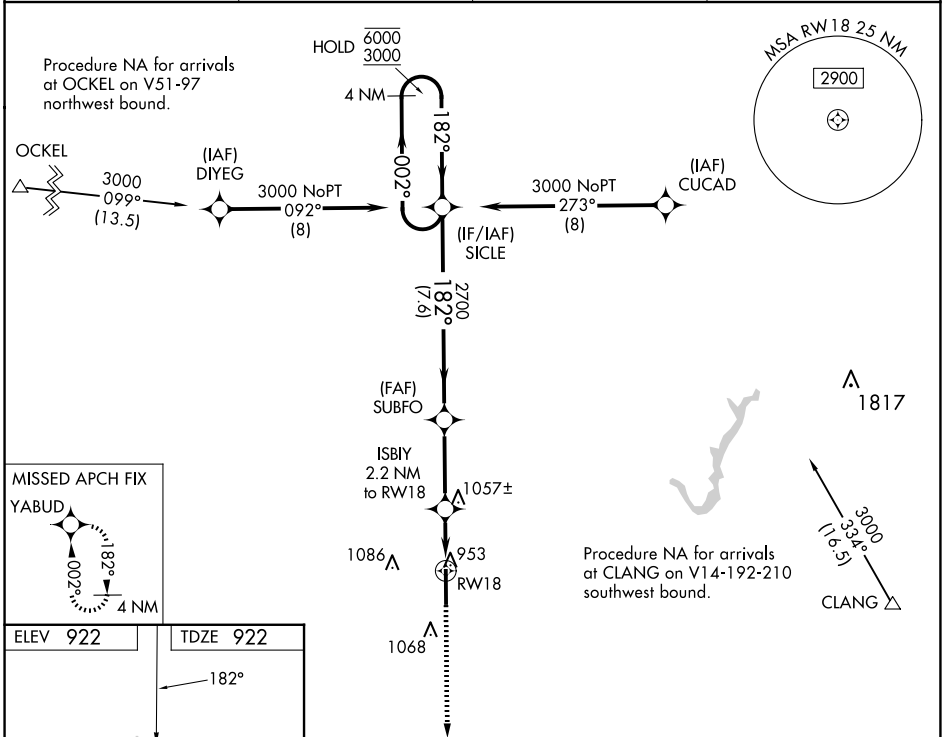
APP CRS 182°	Rwy Idg 7000
	TDZE 922
	Apt Elev 922

RNAV (GPS) RWY 18

INDIANAPOLIS EXEC (TYQ)

RNP APCH - GPS.		MISSED APPROACH: Climb to 3000 direct YABUD and hold.
<p>▼ Rwy 18 helicopter visibility reduction below 3/4 SM NA. For uncompensated Baro-VNAV systems, LNAV/VNAV NA below -16°C or above 54°C.</p>		

AWOS-3PT 120.725	INDIANAPOLIS APP CON 124.65 127.15 317.8	CLNC DEL 118.175	UNICOM 123.05 (CTAF)
----------------------------	----------------------------------------------------	----------------------------	--------------------------------



CATEGORY	A	B	C	D
LNAV/VNAV DA	1216-7/8		294 (300-7/8)	
LNAV MDA	1320-1 398 (400-1)		1320-1 1/8 398 (400-1 1/8)	
C CIRCLING	1380-1 458 (500-1)		1440-1 1/2 518 (600-1 1/2) 1480-2 558 (600-2)	

EC-2, 20 FEB 2025 to 20 MAR 2025

EC-2, 20 FEB 2025 to 20 MAR 2025