

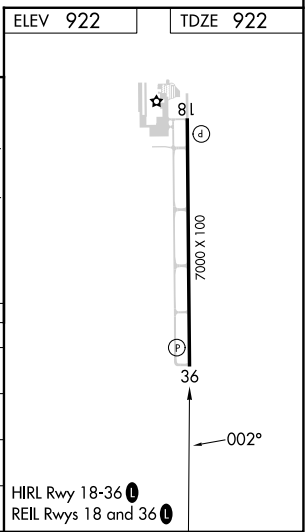
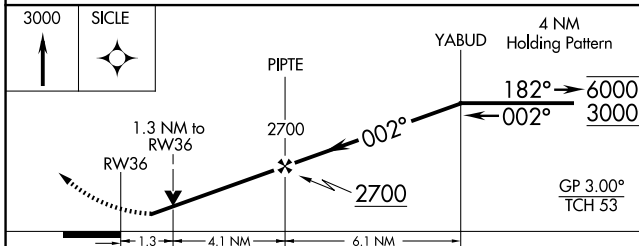
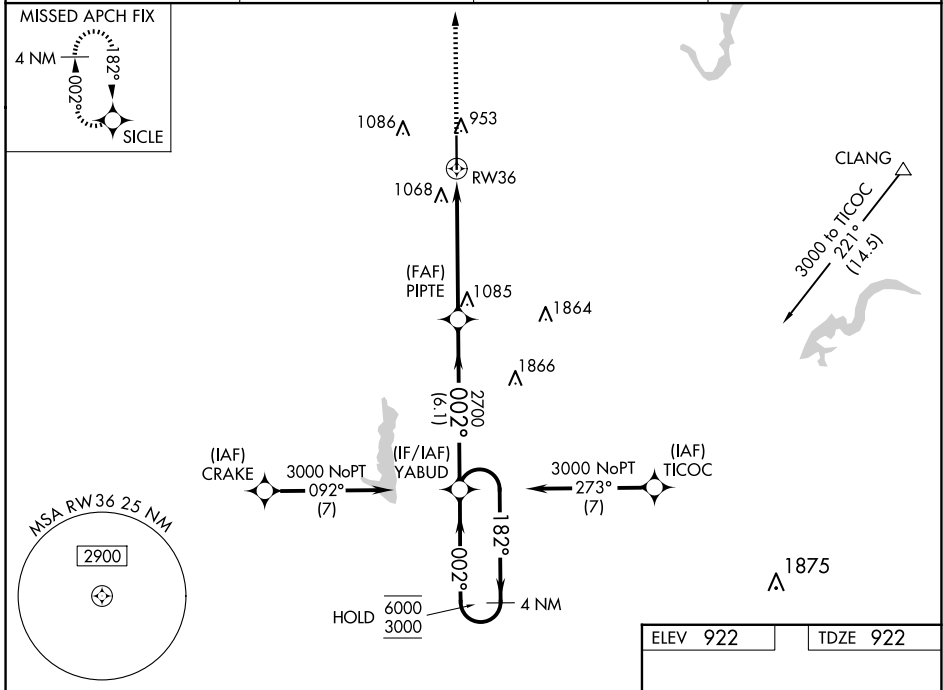
WAAS CH <b>53599</b> <b>W36A</b>	APP CRS <b>002°</b>	Rwy Idg <b>7000</b> TDZE <b>922</b> Apt Elev <b>922</b>
--	------------------------	---

# RNAV (GPS) RWY 36

INDIANAPOLIS EXEC (TYQ)

RNP APCH - GPS.	MISSED APPROACH: Climb to 3000 direct SICLE and hold.
<p>▼ Rwy 36 helicopter visibility reduction below 3/4 SM NA. For uncompensated Baro-VNAV systems, LNAV/VNAV NA below -16°C or above 54°C.</p>	

AWOS-3PT <b>120.725</b>	INDIANAPOLIS APP CON <b>124.65 127.15 317.8</b>	CLNC DEL <b>118.175</b>	UNICOM <b>123.05 (CTAF)</b>
----------------------------	--	----------------------------	--------------------------------



CATEGORY	A	B	C	D
LPV DA		1199-7/8	277 (300-7/8)	
LNAV/VNAV DA		1351-1 1/4	429 (500-1 1/4)	
LNAV MDA	1400-1	478 (500-1)	1400-1 3/8	478 (500-1 3/8)
CIRCLING	1400-1	478 (500-1)	1440-1 1/2 518 (600-1 1/2)	1480-2 558 (600-2)

EC-2, 20 FEB 2025 to 20 MAR 2025

EC-2, 20 FEB 2025 to 20 MAR 2025