

**(ROCKY1.ROCKY) 23334**  
**ROCKY ONE DEPARTURE**

AL-5438 (FAA)

INDIANAPOLIS EXEC (TYQ)  
 INDIANAPOLIS, INDIANA

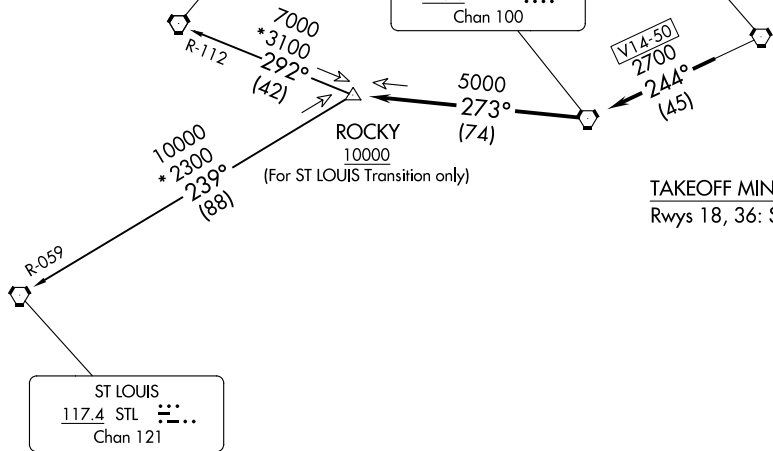
AWOS-3PT  
 120.725  
 INDIANAPOLIS DEP CON  
 124.65 127.15 317.8

**TOP ALTITUDE:  
 ASSIGNED BY ATC**

SPINNER  
112.7 SPI  $\dashv\vdash\vdash\vdash\vdash\vdash\vdash$   
 Chan 74

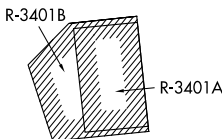
BRICKYARD  
116.3 VHP  $\dashv\vdash\vdash\vdash\vdash\vdash\vdash$   
 Chan 110

TERRE HAUTE  
115.3 TTH  $\dashv\vdash\vdash\vdash\vdash\vdash$   
 Chan 100



TAKEOFF MINIMUMS  
 Rwy's 18, 36: Standard.

- NOTE: RADAR required.
- NOTE: Select appropriate localizer/DME frequency/channel prior to departure.
- NOTE: Turbojets accelerate to 250K until reaching 10000, if unable advise ATC.
- NOTE: Assigned to aircraft with a requested altitude of 11000 or above.



NOTE: Chart not to scale.

**DEPARTURE ROUTE DESCRIPTION**

DEPARTING ALL OTHER AUTHORIZED RUNWAYS: Climb on assigned heading to assigned altitude. Thence . . . .

. . . . expect RADAR vectors to join VHP R-244 to TTH VORTAC, then via TTH R-273 to ROCKY INT then via transition or assigned route. Expect clearance to requested altitude ten minutes after departure.

SPINNER TRANSITION (ROCKY1.SPI): From over ROCKY INT on SPI R-112 to SPI VORTAC.  
ST LOUIS TRANSITION (ROCKY1.STL): From over ROCKY INT on STL R-059 to STL VORTAC.

**ROCKY ONE DEPARTURE**  
**(ROCKY1.ROCKY) 01FEB18**

INDIANAPOLIS, INDIANA  
 INDIANAPOLIS EXEC (TYQ)

EC-2, 20 FEB 2025 to 20 MAR 2025

EC-2, 20 FEB 2025 to 20 MAR 2025