

VORTAC VHP <b>116.3</b> Chan <b>110</b>	APP CRS <b>201°</b>	Rwy Idg <b>7000</b> TDZE <b>922</b> Apt Elev <b>922</b>
---	------------------------	---

# VOR RWY 18

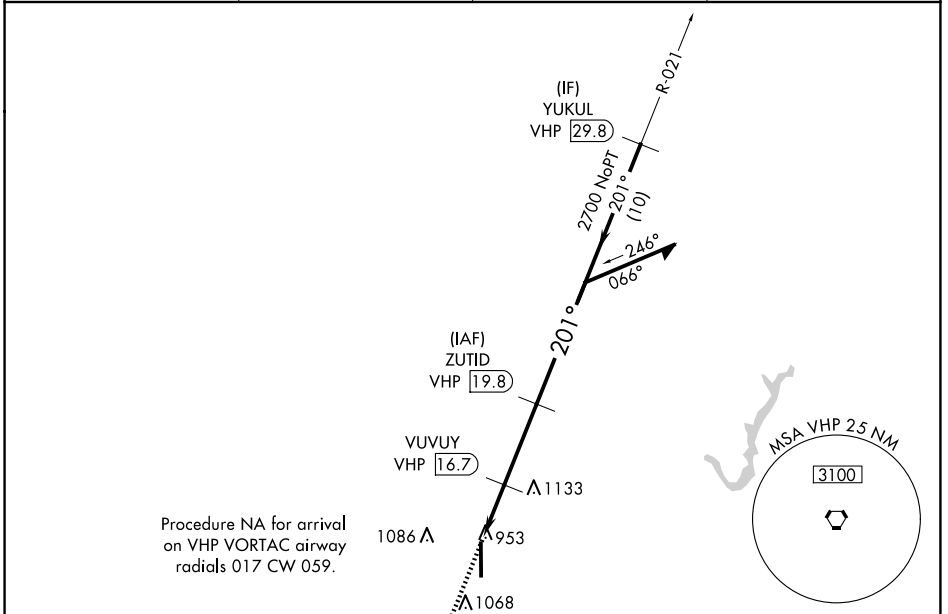
INDIANAPOLIS EXEC (TYQ)

DME required.

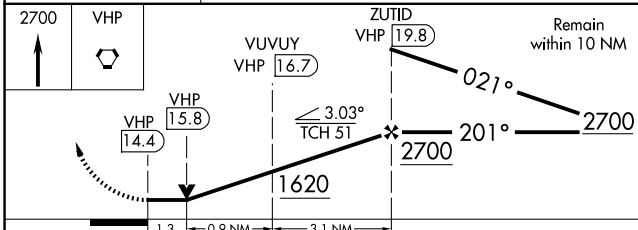
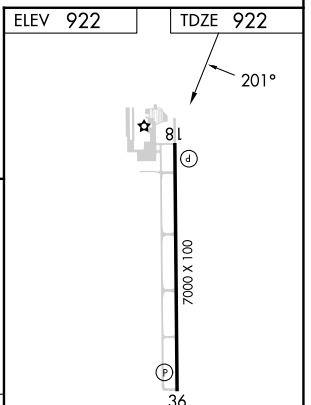
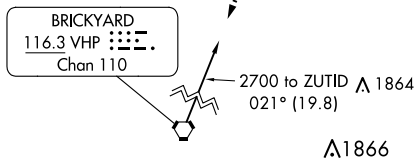
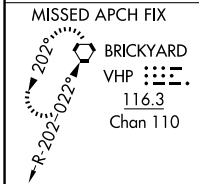
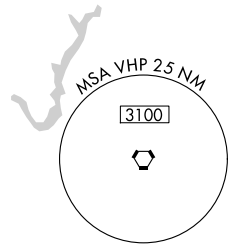
▼  
▲ Rwy 18 helicopter visibility reduction below 3/4 SM NA.

MISSED APPROACH: Climb to 2700 direct VHP VORTAC and hold.

AWOS-3PT <b>120.725</b>	INDIANAPOLIS APP CON <b>124.65 127.15 317.8</b>	CLNC DEL <b>118.175</b>	UNICOM <b>123.05 (CTAF) ①</b>
----------------------------	--	----------------------------	----------------------------------



Procedure NA for arrival on VHP VORTAC airway radials 017 CW 059.



CATEGORY	A	B	C	D
S-18	1400-1 478 (500-1)		1400-1 3/8 478 (500-1 3/8)	
CIRCLING	1400-1 478 (500-1)		1440-1 1/2 518 (600-1 1/2)	1480-2 558 (600-2)

HIRL Rwy 18-36 ①  
REIL Rwsy 18 and 36 ①

EC-2, 20 FEB 2025 to 20 MAR 2025

EC-2, 20 FEB 2025 to 20 MAR 2025