

VORTAC HYS <b>110.4</b> Chan <b>41</b>	APP CRS <b>170°</b>	Rwy Idg TDZE Apt Elev	<b>6501</b> <b>1999</b> <b>1999</b>
--	------------------------	-----------------------------	---

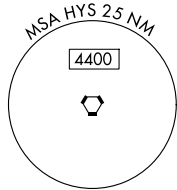
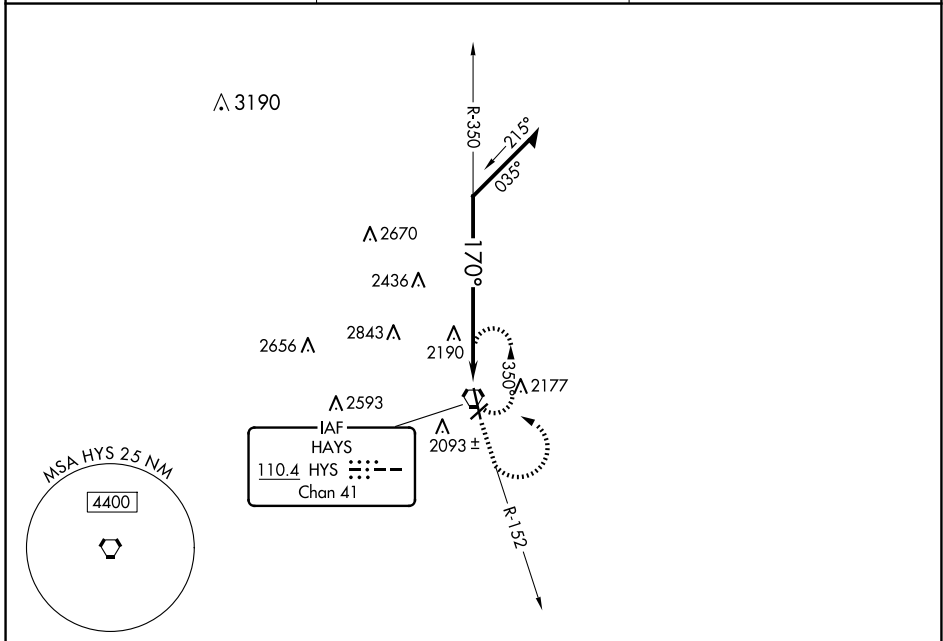
# VOR RWY 16

HAYS RGNL (HYS)

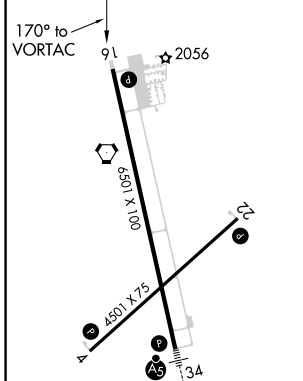
**⚠** When local altimeter setting not received, use Russell altimeter setting and increase all MDA 80 feet, increase S-16 and Circling Cats B, C and D visibility ¼ mile. Visibility reduction by helicopters NA. Circling NA for Cat D northwest of Rwy 4 and west of Rwy 16.

**MISSED APPROACH:** Climb to 3800 via HYS R-152 then climbing left turn to 3900 direct HYS VORTAC and hold.

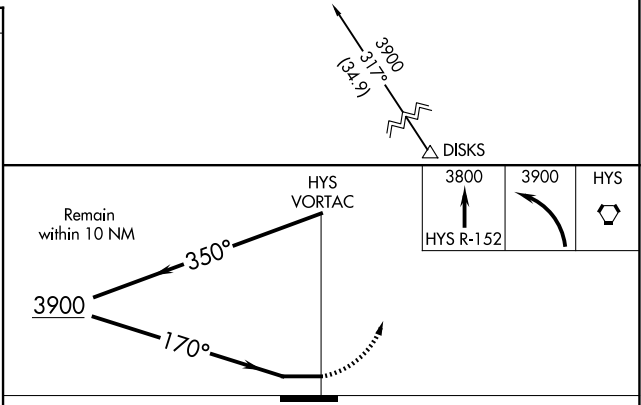
AWOS-3PT <b>125.525</b>	KANSAS CITY CENTER <b>124.4 322.4</b>	UNICOM <b>122.8 (CTAF) 0</b>
----------------------------	--	---------------------------------



ELEV 1999	<b>D</b>	TDZE 1999
-----------	----------	-----------



REIL Rws 4, 22 and 16 **0**  
MIRL Rws 4-22 and 16-34 **0**



CATEGORY	A	B	C	D
S-16	2700-1	701 (800-1)	2700-2 701 (800-2)	2700-2¼ 701 (800-2¼)
CIRCLING	2700-1	701 (800-1)	2700-2 701 (800-2)	2700-2¼ 701 (800-2¼)

NC-2, 20 FEB 2025 to 20 MAR 2025

NC-2, 20 FEB 2025 to 20 MAR 2025