

| | | | |
|--|------------------------|-----------------------------|---|
| WAAS CH 63230 W17A | APP CRS 173° | Rwy Idg TDZE Apt Elev | 5501 592 592 |
|--|------------------------|-----------------------------|---|

RNAV (GPS) RWY 17

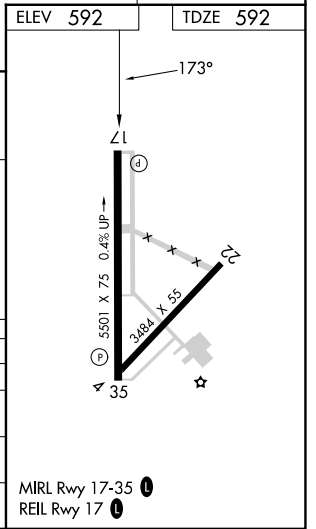
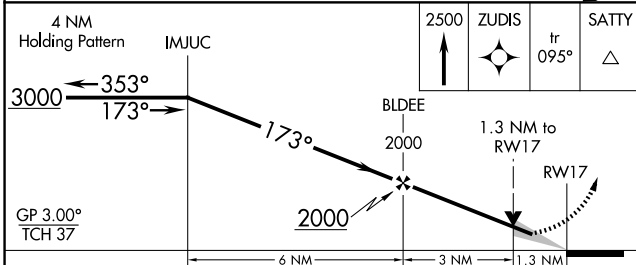
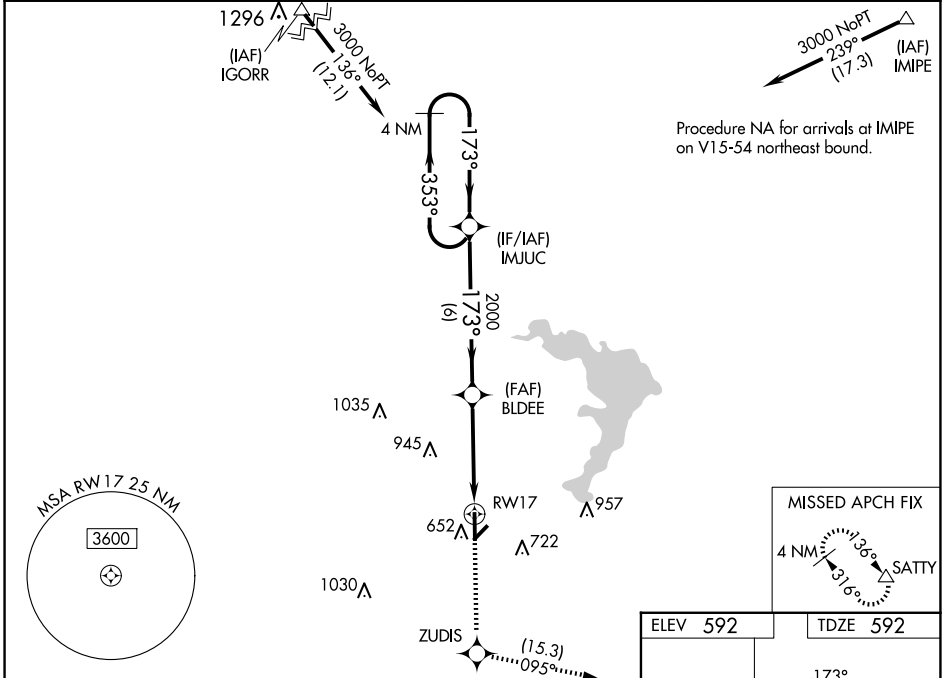
MC GREGOR EXEC (PWG)

RNP APCH - GPS.

ASR Baro-VNAV NA when using Waco Rgnl altimeter setting. For uncompensated Baro-VNAV systems, LNAV/VNAV NA below -20°C or above 54°C. When local altimeter setting not received, use Waco Rgnl altimeter setting and increase LPV DA to 873 feet and all visibilities 1/8 SM; increase LNAV/VNAV DA to 873 feet and all visibilities 1/8 SM; increase all MDAs 40 feet and Circling visibility Cat C 1/4 SM.

MISSED APPROACH:
Climb to 2500 direct ZUDIS and on track 095° to SATTY and hold.

| | | | |
|----------------------------|---------------------------------------|-----------------------|---|
| AWOS-3PT 135.525 | WACO APP CON ★ 127.65 352.0 | GCO 121.725 | UNICOM 123.05 (CTAF) 0 |
|----------------------------|---------------------------------------|-----------------------|---|



| CATEGORY | A | B | C | D |
|--------------|-----------------------|-----------------------|-------------------------------|----|
| LPV DA | 842-3/4 | 250 (300-3/4) | | NA |
| LNAV/VNAV DA | 842-3/4 | 250 (300-3/4) | | NA |
| LNAV MDA | 1040-1 | 448 (500-1) | 1040-1 3/8 448 (500-1 3/8) | NA |
| CIRCLING | 1040-1 448 (500-1) | 1060-1 468 (500-1) | 1300-2 708 (800-2) | NA |

SC-3, 20 FEB 2025 to 20 MAR 2025

SC-3, 20 FEB 2025 to 20 MAR 2025