

APP CRS	Rwy Idg	6203
307°	TDZE	4840
	Apt Elev	4849

RNAV (GPS) RWY 31

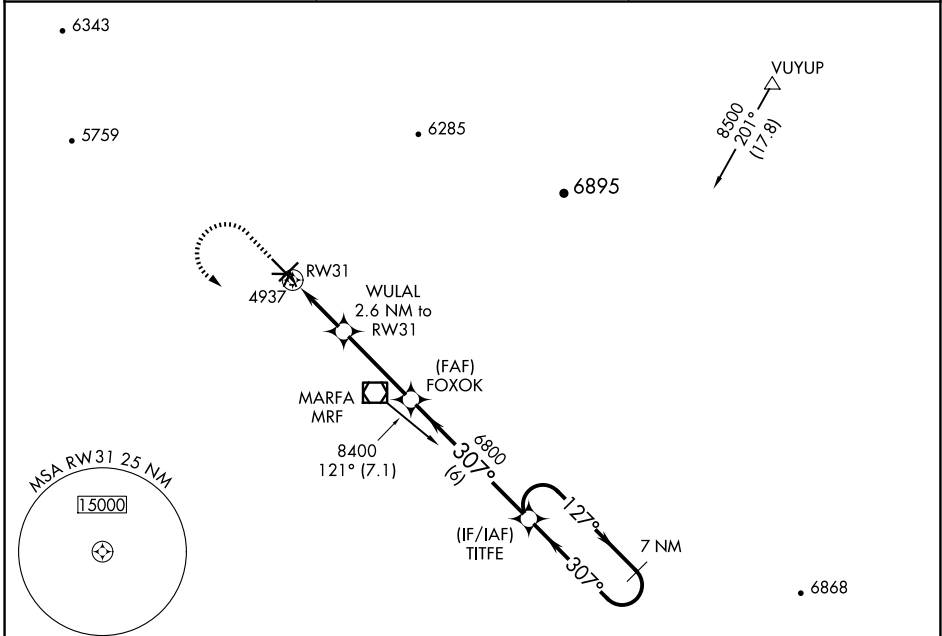
MARFA MUNI (MRF)

RNP APCH-GPS.

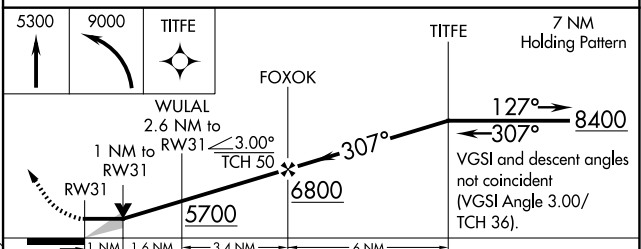
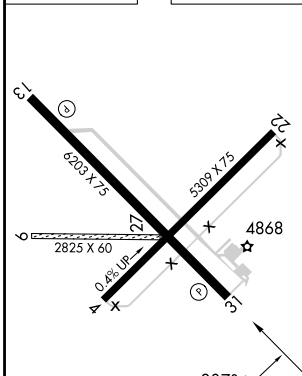
- ▼ When local altimeter setting not received, procedure NA.
- ▲ Circling NA to Rwy 9, 27.

MISSED APPROACH: Climb to 5300 then climbing left turn to 9000 direct TITFE and hold, continue climb-in-hold to 9000.

AWOS-3PT 134.025	ALBUQUERQUE CENTER 135.875 292.15	UNICOM 122.8 (CTAF)
----------------------------	---	-------------------------------



ELEV 4849	TDZE 4840
------------------	------------------



CATEGORY	A	B	C	D
LNAV MDA	5200-1		360 (400-1)	
C CIRCLING	5280-1 431 (500-1)	5300-1 451 (500-1)	5440-1½ 591 (600-1½)	5780-3 931 (1000-3)

MARFA, TEXAS
Orig-C 08SEP22

30°22'N-104°01'W

RNAV (GPS) RWY 31

MARFA MUNI (MRF)

SC-3, 20 FEB 2025 to 20 MAR 2025

SC-3, 20 FEB 2025 to 20 MAR 2025