

VOR/DME MRF <b>115.9</b> Chan <b>106</b>	APP CRS <b>313°</b>	Rwy Idg TDZE Apt Elev <b>6203</b> <b>4840</b> <b>4849</b>
--	------------------------	--

# VOR RWY 31

MARFA MUNI (MRF)

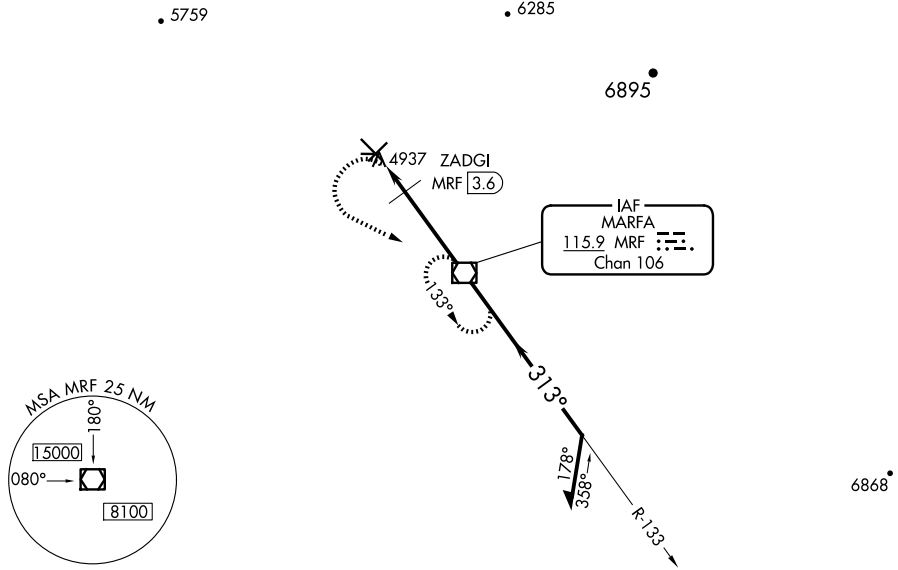
**▽** When local altimeter setting not received, procedure NA.  
**▲** Circling NA to Rwy 9, 27.

MISSED APPROACH: Climbing left turn to 9000 direct MRF VOR/DME and hold, continue climb-in-hold to 9000.

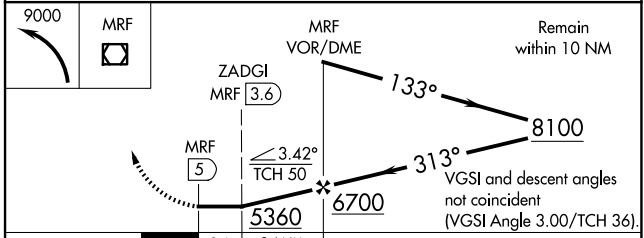
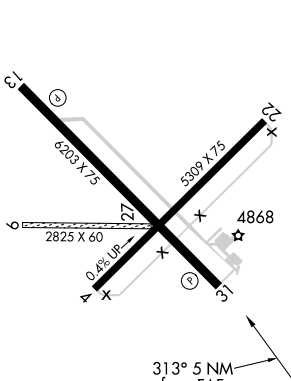
AWOS-3PT  
**134.025**

ALBUQUERQUE CENTER  
**135.875 292.15**

UNICOM  
**122.8 (CTAF)**



ELEV <b>4849</b>	TDZE <b>4840</b>
------------------	------------------



CATEGORY	A	B	C	D
S-31	5360-1	520 (600-1)	5360-1 $\frac{3}{8}$	520 (600-1 $\frac{3}{8}$ )
<b>C</b> CIRCLING	5360-1	511 (600-1)	5440-1 $\frac{1}{2}$ 591 (600-1 $\frac{1}{2}$ )	5780-3 931 (1000-3)
ZADGI FIX MINIMUMS				
S-31	5200-1		360 (400-1)	
<b>C</b> CIRCLING	5280-1 431 (500-1)	5300-1 451 (500-1)	5440-1 $\frac{1}{2}$ 591 (600-1 $\frac{1}{2}$ )	5780-3 931 (1000-3)

FAF to MAP 5 NM					
Knots	60	90	120	150	180
Min:Sec	5:00	3:20	2:30	2:00	1:40

SC-3, 20 FEB 2025 to 20 MAR 2025

SC-3, 20 FEB 2025 to 20 MAR 2025