

WAAS CH <b>60934</b> <b>W36A</b>	APP CRS <b>004°</b>	Rwy Idg TDZE Apt Elev	<b>3800</b> <b>832</b> <b>835</b>
--	------------------------	-----------------------------	---

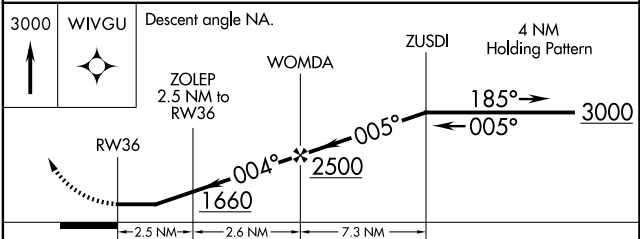
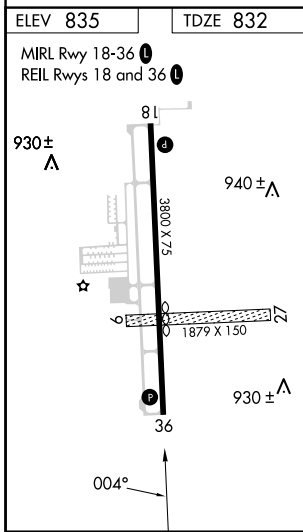
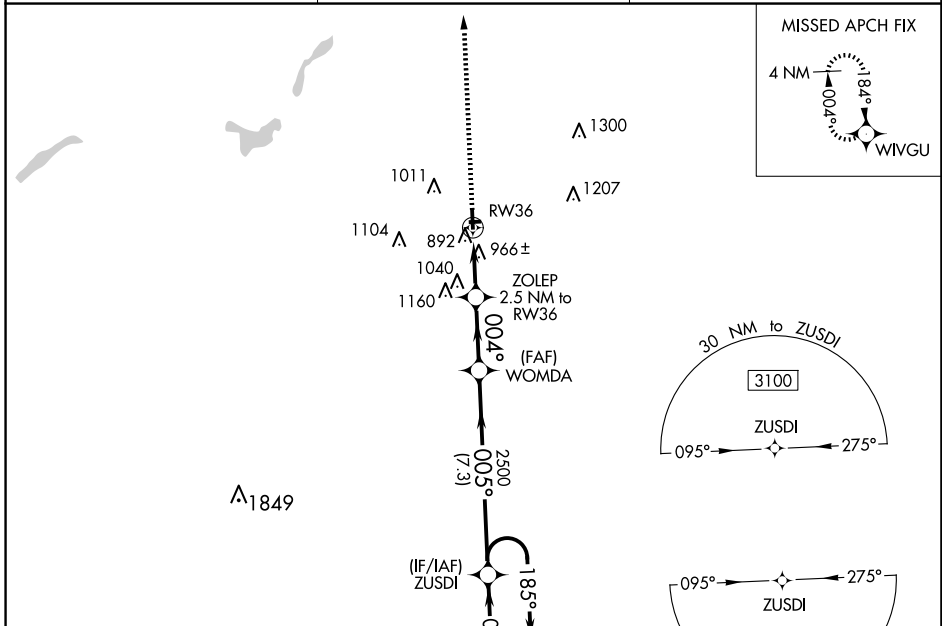
# RNAV (GPS) RWY 36

DUPONT/LAPEER (D95)

**▽** DME/DME RNP-0.3 NA. Helicopter visibility reduction below ¾ SM NA. When local altimeter setting not received, use Flint altimeter setting and increase all MDA 60 feet and increase LNAV Cat C visibility ½ mile and LP Cat C and Circling Cat C visibility ¼ mile. Circling NA to Rwy 9 and 27.

**⚠** MISSED APPROACH: Climb to 3000 direct WIVGU and hold.

AWOS-3P <b>134.050</b>	GREAT LAKES APP CON ★ <b>118.8 257.9</b>	UNICOM <b>123.0 (CTAF) 0</b>
---------------------------	---	---------------------------------



CATEGORY	A	B	C	D
LP MDA	1220-1	388 (400-1)	1220-1½ 388 (400-1½)	NA
LNAV MDA	1260-1	428 (500-1)	1260-1¼ 428 (500-1¼)	NA
<b>☑</b> CIRCLING	1300-1 465 (500-1)	1380-1 545 (600-1)	1460-1¾ 625 (700-1¾)	NA

EC-1, 20 FEB 2025 to 20 MAR 2025

EC-1, 20 FEB 2025 to 20 MAR 2025