

| | | |
|-------------|----------|-------------|
| APP CRS | Rwy Idg | 4440 |
| 146° | TDZE | 721 |
| | Apt Elev | 742 |

RNAV (GPS) RWY 15

KENOSHA RGNL (ENW)

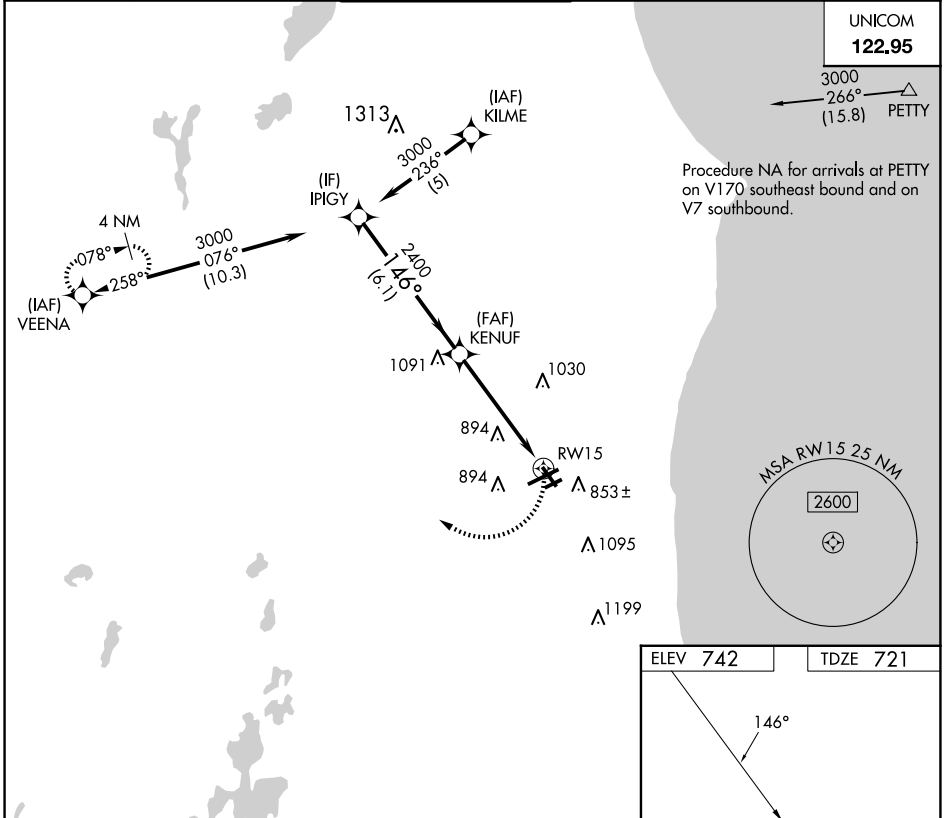
RNP APCH.

▼ Rwy 15 helicopter visibility reduction below 1 SM NA. Straight-In and Circling Rwy 15 NA at night, Circling Rwy 7R NA at night.

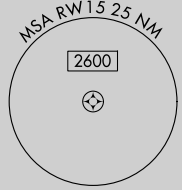
MISSED APPROACH:
Climbing right turn to 3000
direct VEENA and hold.

| | | | | | |
|------------------------|---|--|---------------------------|----------------------------|---|
| ATIS 127.175 | MILWAUKEE APP CON 135.875 317.725 | KENOSHA TOWER * 118.6 (CTAF) 0 353.6 | GND CON 121.875 | CLNC DEL 121.875 | CLNC DEL 118.6 (When twr closed) |
|------------------------|---|--|---------------------------|----------------------------|---|

UNICOM
122.95

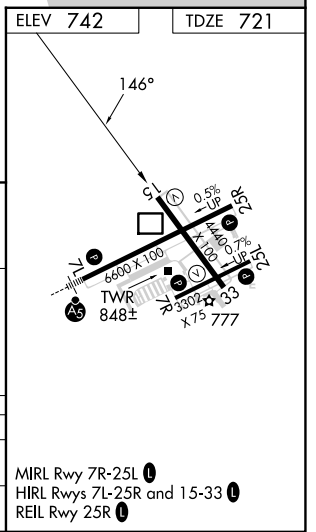
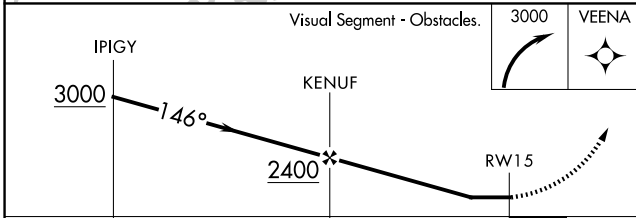


Procedure NA for arrivals at PETTY on V170 southeast bound and on V7 southbound.



EC-3, 20 FEB 2025 to 20 MAR 2025

EC-3, 20 FEB 2025 to 20 MAR 2025



| | | | | |
|----------|-----------------------|-----------------------|--|--|
| | 6.1 NM | | 5.1 NM | |
| CATEGORY | A | B | C | D |
| LNVA MDA | 1200-1 | 479 (500-1) | 1200-1 $\frac{3}{8}$ 479 (500-1 $\frac{3}{8}$) | 1200-1 $\frac{1}{2}$ 479 (500-1 $\frac{1}{2}$) |
| CIRCLING | 1200-1 458 (500-1) | 1340-1 598 (600-1) | 1400-1 $\frac{3}{4}$ 658 (700-1 $\frac{3}{4}$) | 1440-2 $\frac{1}{4}$ 698 (700-2 $\frac{1}{4}$) |

MIRL Rwy 7R-25L **0**
HIRL Rwy 7L-25R and 15-33 **0**
REIL Rwy 25R **0**