

APP CRS <b>326°</b>	Rwy Idg TDZE Apt Elev	<b>4440</b> <b>721</b> <b>742</b>
------------------------	-----------------------------	---

# RNAV (GPS) RWY 33

KENOSHA RGNL (E.N.W)

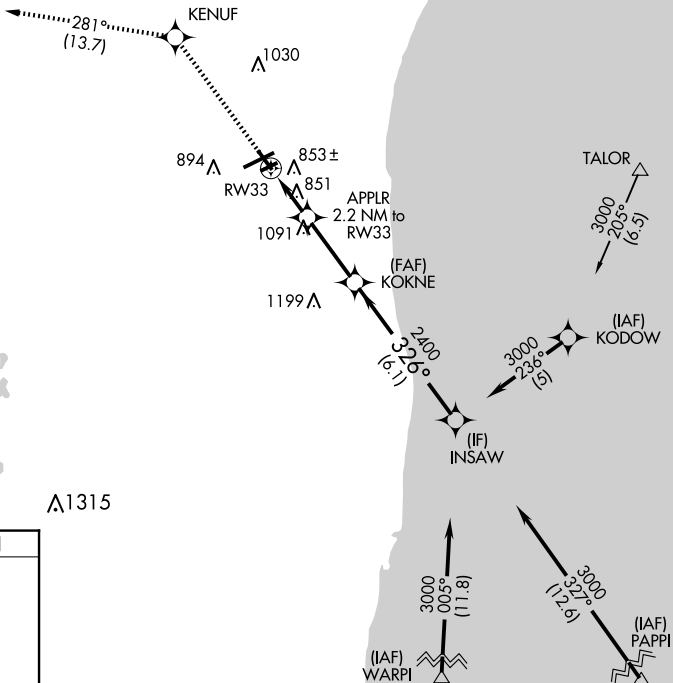
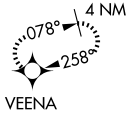
RNP APCH.

- Circling Rwy 7R, 15 NA at night.

MISSED APPROACH: Climb to 3000 direct KENUF and on track 281° to VEENA and hold.

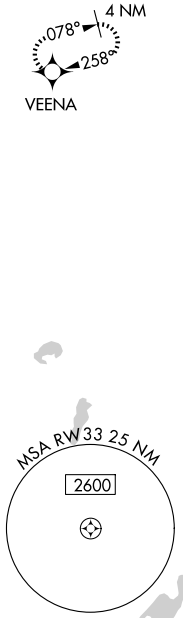
ATIS <b>127.175</b>	MILWAUKEE APP CON <b>135.875 317.725</b>	<b>KENOSHA TOWER *</b> <b>118.6 (CTAF) 0 353.6</b>	GND CON <b>121.875</b>	CLNC DEL <b>121.875</b>	CLNC DEL <b>118.6</b> (When twr closed)
------------------------	---	---	---------------------------	----------------------------	---

UNICOM  
**122.95**

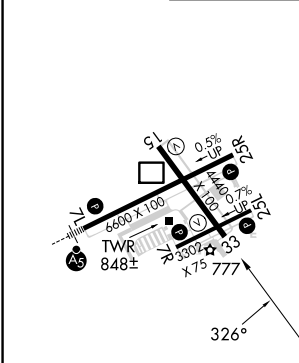


EC-3, 20 FEB 2025 to 20 MAR 2025

EC-3, 20 FEB 2025 to 20 MAR 2025

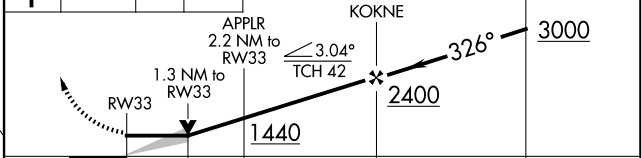


ELEV 742	TDZE 721
----------	----------



MIRL Rwy 7R-25L  
 HIRL Rwy 7L-25R and 15-33  
 REIL Rwy 25R

3000	KENUF	tr 281°	VEENA
------	-------	---------	-------



CATEGORY	A	B	C	D
LNAV MDA	1180-1	459 (500-1)	1180-1 3/8 459 (500-1 3/8)	1180-1 1/2 459 (500-1 1/2)
CIRCLING	1200-1 458 (500-1)	1340-1 598 (600-1)	1400-1 3/4 658 (700-1 3/4)	1440-2 1/4 698 (700-2 1/4)