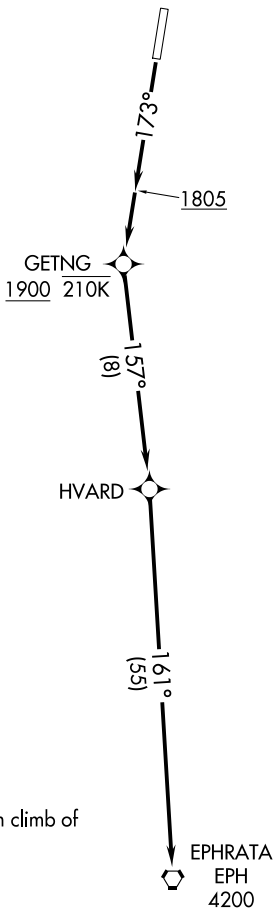


SEATTLE CENTER
126.1 291.6



NOTE: GPS required.
NOTE: RNAV-1.

TAKEOFF MINIMUMS

Rwy 17: Standard with minimum climb of 332' per NM to 4000.
Rwy 35: NA-obstacles.

TAKEOFF OBSTACLE NOTES

Rwy 17: Vehicles on road, vegetation beginning 5' from DER, 452' left of centerline, up to 10' AGL/1306' MSL.
 Lighting 40' from DER, 78' right of centerline, 1' AGL/1301' MSL.
 Vegetation beginning 50' from DER, 172' right of centerline, up to 1305' MSL.
 Vegetation 305' from DER, 499' right of centerline, 5' AGL/1308' MSL.
 Vegetation 311' from DER, 529' right of centerline, 9' AGL/1311' MSL.
 Pole 1621' from DER, 737' left of centerline, 56' AGL/1339' MSL.
 Tree 1972' from DER, 28' left of centerline, 66' AGL/1350' MSL.
 Tree 2080' from DER, 78' right of centerline, 68' AGL/1352' MSL.

NOTE: Chart not to scale.

DEPARTURE ROUTE DESCRIPTION

TAKEOFF RUNWAY 17: Climb on heading 173° to 1805, then direct GETNG at or above 1900 at or below 210K, then on depicted route to cross EPH VORTAC at or above 4200, then proceed on course.

NW-1, 20 FEB 2025 to 20 MAR 2025

NW-1, 20 FEB 2025 to 20 MAR 2025